

Beachum & Roeser

EST. 1976

DEVELOPMENT & MANAGEMENT CORPORATION

31100 Telegraph Road, Suite 200
Bingham Farms, MI 48025

Phone: 248-647-7500

Fax: 248-647-9750

www.beachumroeser.com

Office Space For Lease

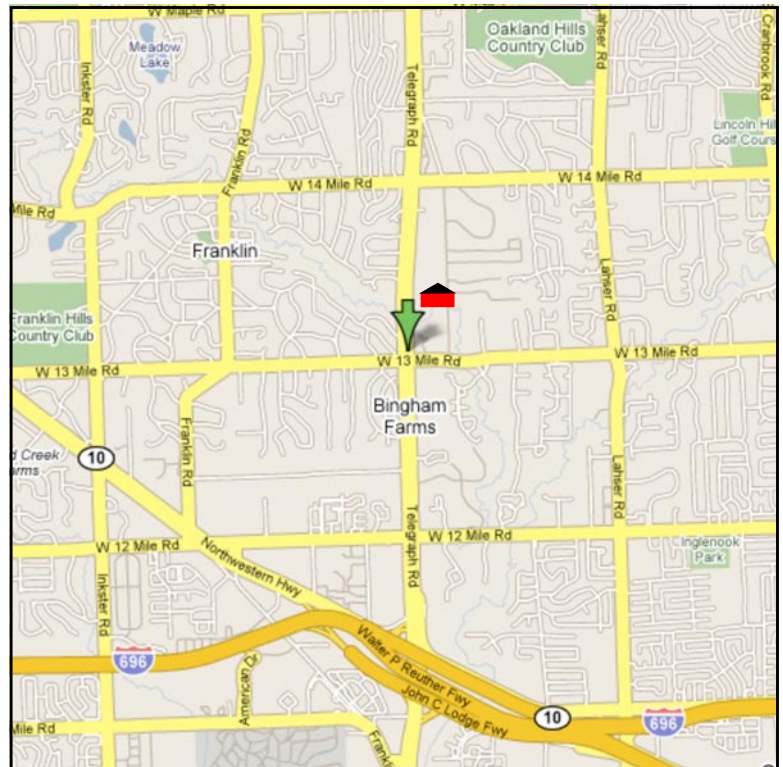
Jamestowne Executive Offices

31100 Telegraph Road, Suite 220
Bingham Farms, MI 48025

1,360 Rentable Sq Ft

Great location with beautiful stained oak double door building entry off of large veranda leading into a beautiful stained oak common hallway with French door private suite entries. Suite consists of large executive sized, windowed office, one non-windowed office, conference room, nice reception area, a large copy/supply room and a kitchen. Windows are operable to provide fresh air and there is individual control over the HVAC. Convenient parking just steps from entrance.

- Great exposure on Telegraph Rd!
- Plenty of convenient parking
- Convenient to banks, hotels and gyms
- Near Detroit Metro fwy, M-10, I-696 and NW Hwy
- First floor location
- Beautiful stained oak common corridor
- Windowed offices
- Multiple cubicle areas
- Conference rooms and kitchens



Jamestowne Executive Offices

Suite Size & Address:	1,360 Rentable Square Feet at 31100 Telegraph Road
Load Factor:	Seven (7%) percent
Availability:	Immediate
Rental Rate <small>(Modified Gross):</small>	General office - \$19.50 per square foot Medical office - \$24.00 per square foot
Escalation:	Three (3%) percent per annum
Tax & Operating:	Base Year
Term:	Five (5) year term or longer
Utilities:	Tenant responsible for gas & electric. Suite is separately metered.
Communications:	DSL, T-1
Parking Ratio:	<i>General office:</i> 3.34 spaces per 1,000 u.s.f. <i>Medical:</i> 5 spaces per 1,000 u.s.f.

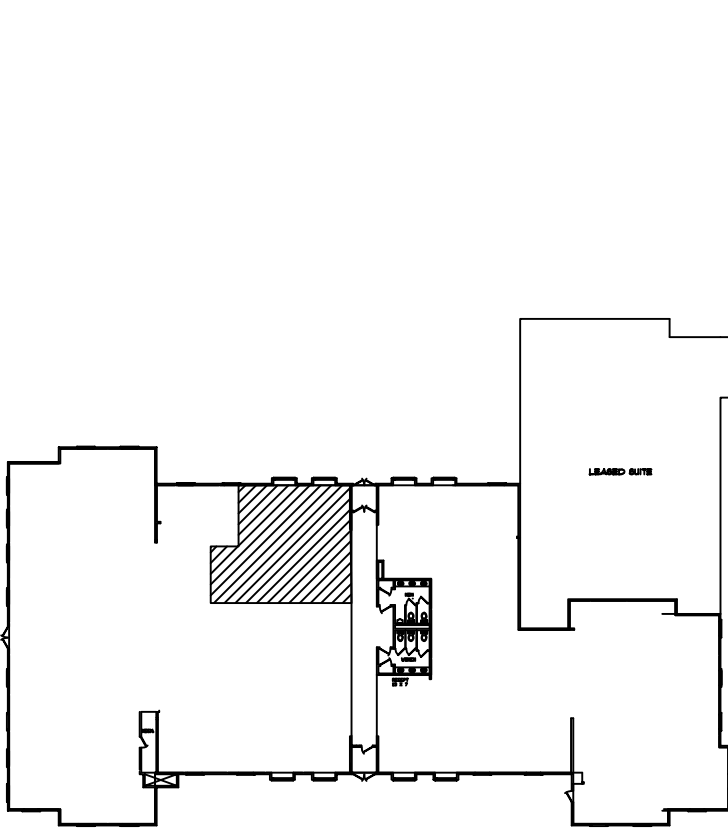
Unique Features:

- Classic Williamsburg architectural design
- Easy access to the Detroit Metropolitan freeway system
- Classic stained oak and marble lobby
- Operative windows that provide fresh air
- Convenient and ample parking
- Beautiful landscaping
- Customer oriented building owners and managers

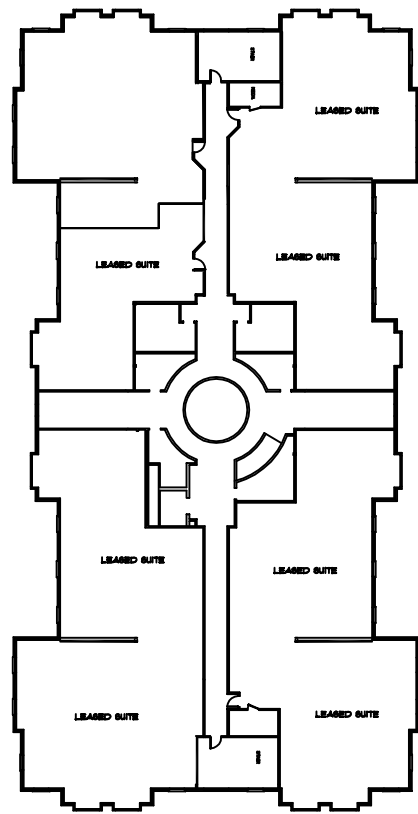
Quick Demographics - Oakland County, MI:

- Population (2005): 1,214,361
- Median household income (2005): \$64,022
- Median house value (2005): \$245,269

Contact: **Michelle A. Riley**
Phone: 248-647-7500
Cell: 248-496-6504
Fax: 248-665-0006
E-Mail: mriley@beachumroeser.com



JAMES TOWNNE EXECUTIVE OFFICES
NEAR TELEGRAPH ROAD, BINGHAM FARMS, MI.
FIRST FLOOR AND TERRACE LEVEL.



JAMES TOWNNE EXECUTIVE OFFICES
NEAR TELEGRAPH ROAD, BINGHAM FARMS, MI.
FIRST AND SECOND FLOOR SUITES



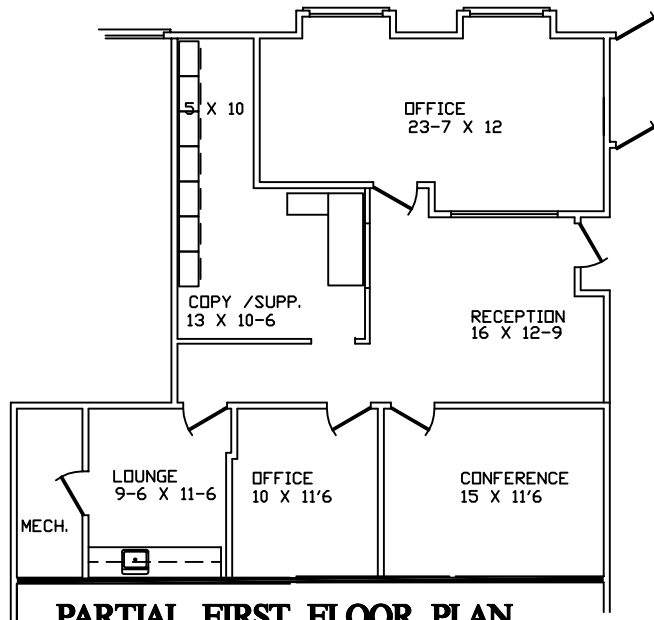
10 MILE ROAD

TELEGRAPH ROAD

Beachum & Poeschl

JAMESTOWNE EXECUTIVE OFFICES

31100 TELEGRAPH ROAD, BINGHAM FARMS, MI.



PARTIAL FIRST FLOOR PLAN

SCALE: 1/8"=1'-0"

AVAILABLE FOR LEASE

SUITE 220

APPROX. 1,360 R.S.F.

12-18-2007

01-016-02-00