



DEVELOPMENT & MANAGEMENT CORPORATION

31100 Telegraph Road, Suite 200
Bingham Farms, MI 48025

Phone: 248-647-7500

Fax: 248-647-9750

www.beachumroeser.com

Office Space For Lease

Wellington Green Executive Offices

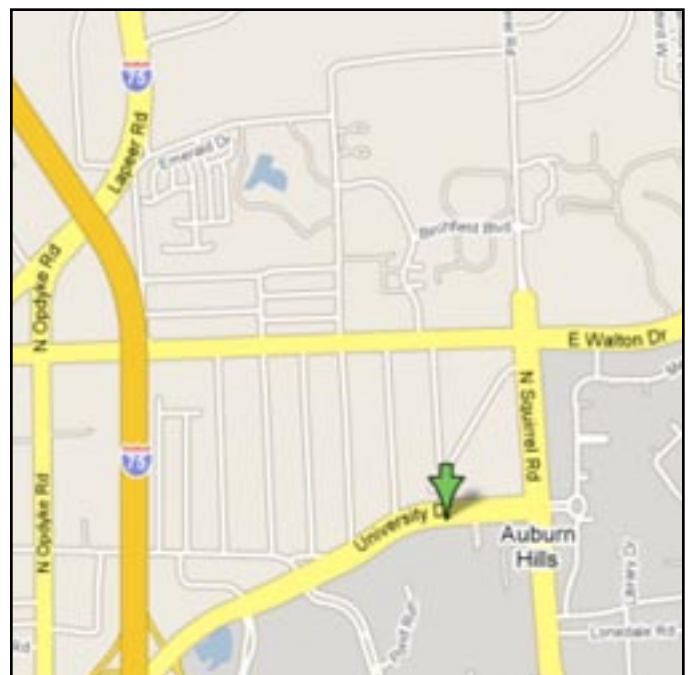
3250 University Drive, Ste. 105
Auburn Hills, MI 48326

3,276 Rentable Sq. Ft.

- Private entrance
- Convenient parking.
- 7 offices
- Conference Room
- Open area for cubicles
- Kitchen
- Private bathrooms
- Equipment/storage room



See floorplan on the back page



Wellington Green Executive Offices

Suite Size & Address:	3,276 Rentable Sq Ft at 3250 University Drive, Suite 105
Load Factor:	Six (6%) percent
Availability:	For information, visit www.beachumroeser.com or call 248-647-7500
Rental Rate <i>(Modified Gross)</i> :	\$19.50 PSF - General Office: \$24.50 PSF - Medical Office
Escalation:	Three (3%) percent per annum
Tax & Operating:	Base Year
Term:	Five (5) year term
Utilities:	Gas & electric separately metered – paid by tenant
Communications:	T-1, DSL and Fiber Optics
Parking Ratio:	<i>Office:</i> 5 spaces per 1,000 u.s.f. <i>Medical:</i> 1 space per 100 u.s.f. of waiting room & 1 per exam room

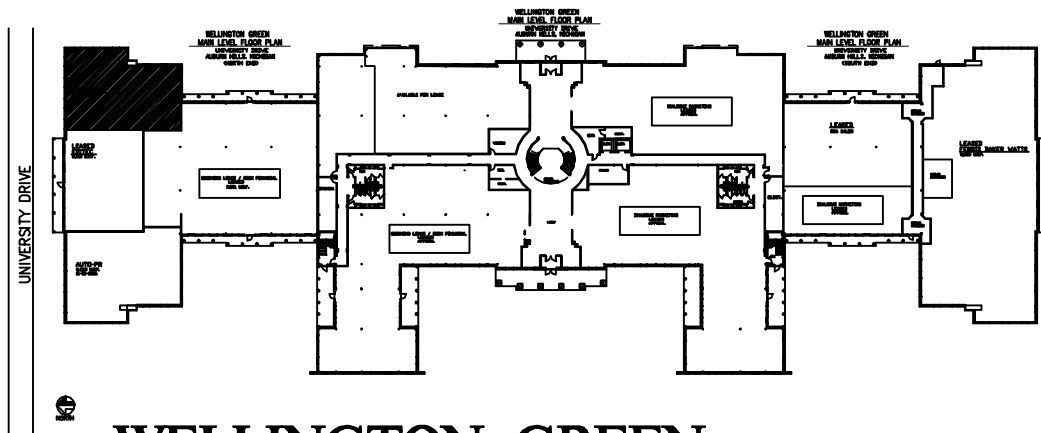
Unique Features:

- Classic Williamsburg architectural design
- Just minutes from I-75 and The Palace of Auburn Hills
- Classic marble lobby with double circular staircase
- University Drive visibility – Located in Oakland Technology Park
- Operative windows that provide fresh air
- Convenient drive up parking just steps from suite entry
- Customer oriented building owners and managers

Quick Demographics - Auburn Hills, MI:

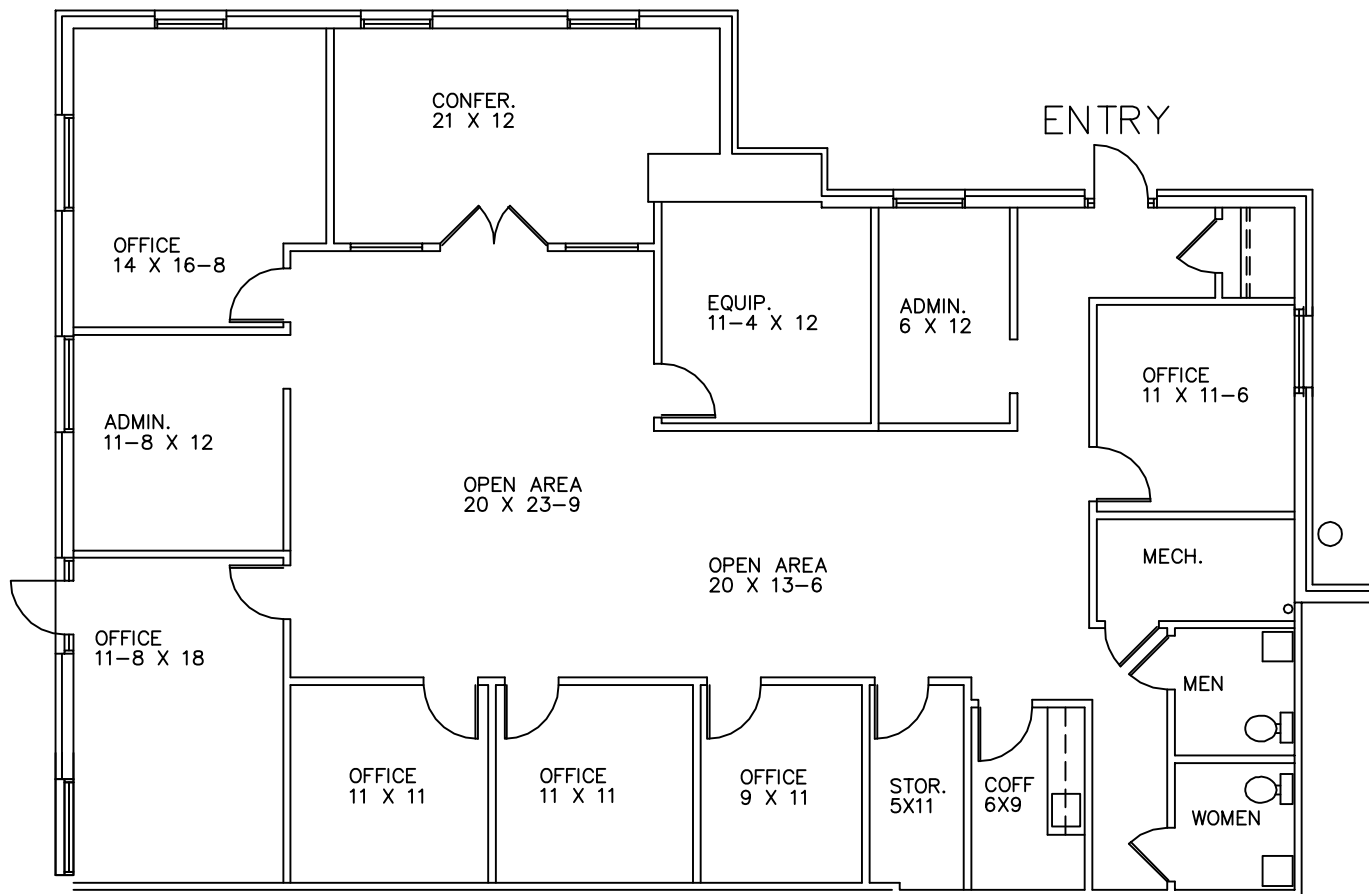
- Population (2006): 20,986
- Median household income (2005): \$53,100
- Median house/condo value (2005): \$173,000
- Oakland County population (2005): 1,214,361 (95% urban, 5% rural)

Contact: **Michelle A. Riley**
Phone: 248-647-7500
Cell: 248-496-6504
Fax: 248-665-0006
E-Mail: mriley@beachumroeser.com



WELLINGTON GREEN

3250 UNIVERSITY DRIVE — AUBURN HILLS, MI.
 AVAILABLE FOR LEASE
 SUITE #105
 APPROX. 3,276 R.S.F.



PARTIAL FIRST FLOOR

SCALE: 1/8"=1'-0"



DEVELOPMENT AND MANAGEMENT CORPORATION

FOR LEASING INFORMATION

CALL:

MICHELLE RILEY

248-647-7500