

**Government Structure**

**Support Services**

**Manager**

Mike Culpepper (248) 370-9440

**Community Development Director**

Brian McBroom (248) 364-6900

**Clerk**

Linda F. Shannon (248) 370-9402

**2006 Tax Rates**

School District	Homestead	Non Homestead
Avondale	\$35.59	\$52.34
Lake Orion	\$34.24	\$52.24
Pontiac	\$28.10	\$46.10
Rochester	\$31.93	\$49.93

Source: www.oakgov.com /equal; rates per \$1000 State Equalized Value and published in December of each tax year

**Private Schools / Colleges**

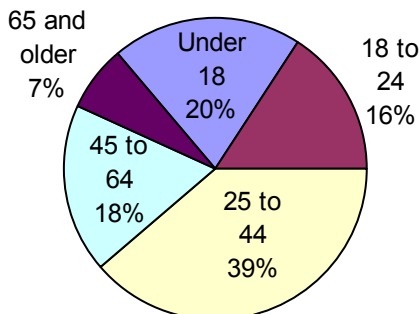
**Private Schools**

Havenwyck School, Oakland Christian, Heritage Christian School

**Colleges and Universities**

Oakland Community College (Auburn Hills), OCC's Combined Regional Emergency Services Training Center (CREST), Baker College

**Population by Age**



O  
A  
K  
L  
A  
N  
D  
C  
O  
U  
N  
T  
Y  
P  
L  
A  
N  
N  
I  
N  
G  
A  
N  
D  
E  
C  
O  
N  
O  
M  
I  
C  
D  
E  
V  
E  
L  
O  
P  
M  
E  
N  
T

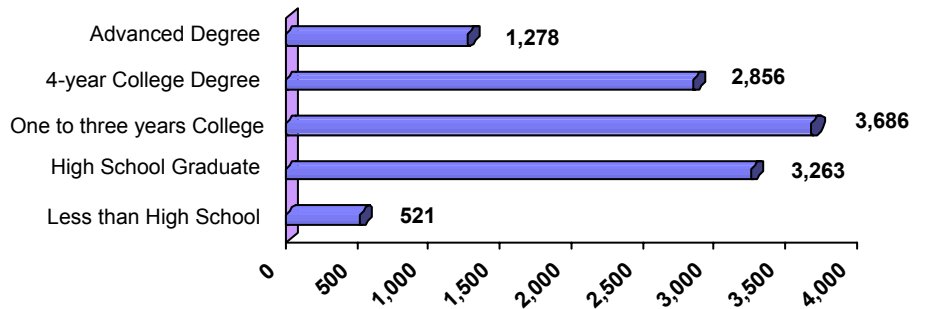
The City of Auburn Hills, incorporated in 1983 and located approximately 30 miles north of Detroit, is one of the fastest growing suburban cities in Southeastern Michigan. Originally settled in the 1800's, this 17.5 square mile city faced its share of economic setbacks. As Pontiac Township, established in 1827, the area was consistently overlooked by business and residential developers who opted for the "new and unspoiled" land surrounding it. Today, however, Auburn Hills is in the unique position of being the center of metropolitan growth. Situated at the intersection of the I-75 and M-59 corridors, it has become a prime location with easy access to Oakland University, Baker College and Oakland Community College high tech research facilities and is home to DaimlerChrysler Corporation's 5.2 million square foot world headquarters. Auburn Hills also has convenient access to three major airports, prime residential areas, entertainment, recreational and cultural facilities; including The Palace of Auburn Hills, home of the Detroit Pistons.

**Public School Enrollment**

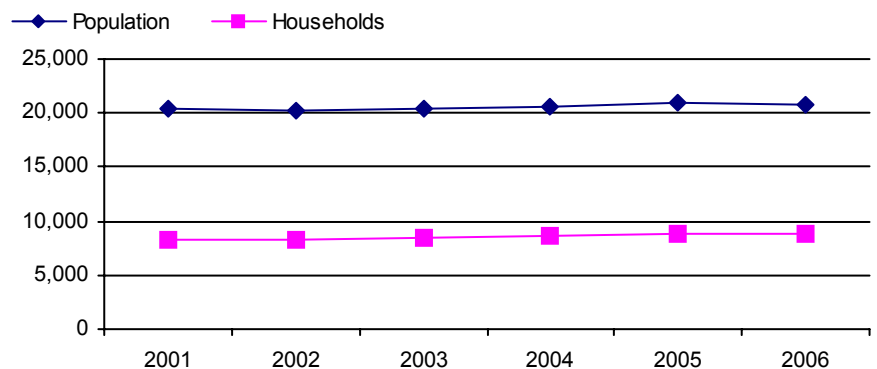
Does not include public school academies

Community	School District	Year	Enrollment
Auburn Hills	Avondale	2006	3817
Auburn Hills	Lake Orion	2006	7856
Auburn Hills	Pontiac	2006	9742
Auburn Hills	Rochester	2006	14609

**Educational Attainment of People Over 25 Years of Age**



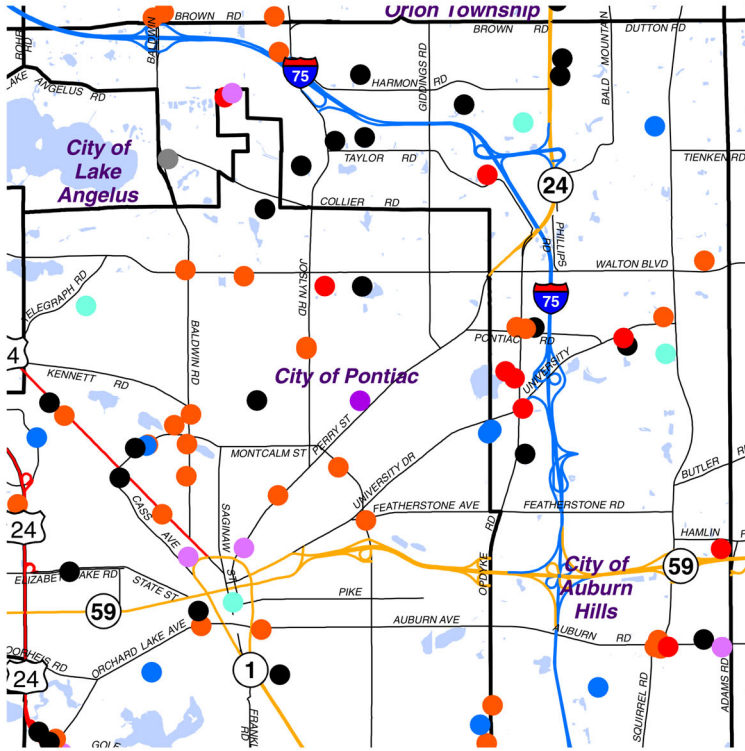
**Population and Household Growth**



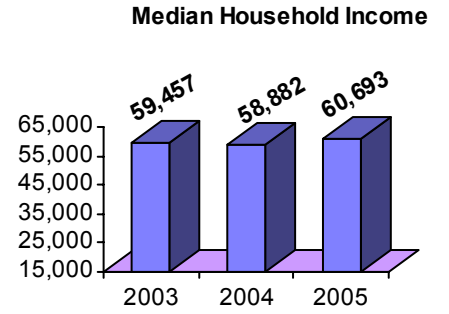
Source: SEMCOG

Local New Development Activity

Quality of Life

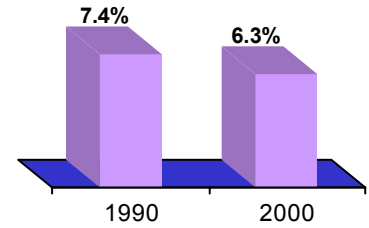


- Mixed-Use
- Office Bldg.
- Trans./Utility
- Medical Facility
- Institutional Facility
- Retail/Commercial Bldg.
- Residential/Commercial
- Leisure Activity/Accommodations
- Industrial/Warehouse/Hi-Tech

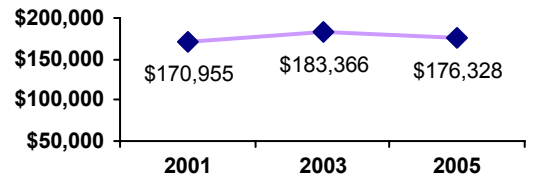


Source: Claritas

Poverty as a percent of Total Population



Average Housing Costs



Values based on number of homes sold  
Source: O.C. Equalization

Top Employers

Rank	CompanyName	Industry
1	Chrysler Group	Automotive manufacturing
2	Creative Staffing Concepts	Employee leasing service
3	Continental Teves, Inc.	Automotive supplier
4	Haden Maclellan Inc	Special industry machinery
5	Palace Sports and Entertainment	Sports and recreation
6	BorgWarner Inc.	Automotive supplier
7	Quest Diagnostics	Testing laboratories
8	Oakland University	Higher education
9	Faurecia Interior Systems Usa Inc	Automotive stampings
10	Valeo Inc.	Automotive supplier

Manufactured Housing

Year	# of Parks	# of Units
2000	4	887
2003	4	887
2005	4	887

Source: SEMCOG

For more information contact:  
 Daniel P. Hunter, Manager  
 Oakland County Planning and Economic  
 Development Services  
 1200 North Telegraph Road, Dept. 412  
 Pontiac, Michigan 48341  
 www.oakgov.com  
 ph: 248 858 0720 fax: 248 975 9555

OAKLAND COUNTY PLANNING AND ECONOMIC DEVELOPMENT 2007