

Government Structure

Support Services

Mayor

Tom McDaniel (248) 988-2904

Manager

Thomas M. Markus (248) 988-2904

Planning Director

Jana Ecker (248) 644-3869

2006 Tax Rates

| School District | Homestead | Non Homestead |
|-----------------|-----------|---------------|
| Birmingham | \$42.97 | \$52.39 |

Source: www.oakgov.com /equal; rates per \$1000 State Equalized Value and published in December of each tax year

Private Schools / Colleges

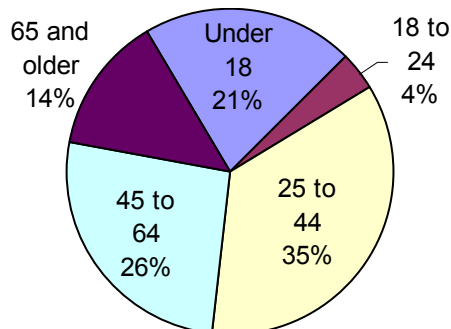
Private Schools

Birmingham Community Montessori, Eton Academy, Gateway Montessori, Holy Name, Our Shephard Lutheran, Roper City and Country Upper

Colleges and Universities

Extension courses at Michigan State University

Population by Age



O
A
K
L
A
N
D
C
O
U
N
T
Y
P
L
A
N
N
I
N
G
A
N
D
E
C
O
N
O
M
I
C
D
E
V
E
L
O
P
M
E
N
T

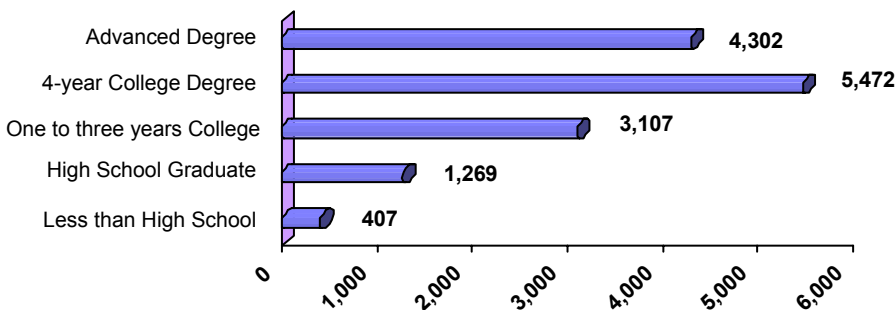
The City of Birmingham is a vibrant, prosperous community, with a population of almost 20,000. Covering only 4.73 square miles, the community is able to maintain the feel of a small town, while experiencing the benefits of an affluent urban area. The City has a lively, pedestrian-friendly downtown offering one of the Midwest's premiere shopping districts. A diverse assortment of fine shops, restaurants, art galleries, antique dealers, and clothiers await visitors. No matter where you park, you can walk the entire shopping district or enjoy two hours of free parking in any of the municipal parking structures. Quarton Lake is nestled in the residential heart of the city. Its quiet banks, where ducks, geese and swans feel at home are a lovely place to take a stroll. Little folk and seniors are allowed to fish from the banks. In a city with so many cultural and recreational amenities as the City of Birmingham, this indeed is a place in to "live, shop, and play."

Public School Enrollment

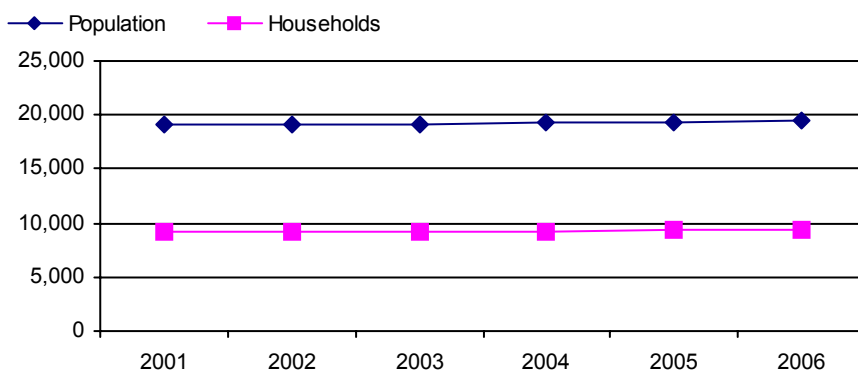
Does not include public school academies

| Community | School District | Year | Enrollment |
|------------|-----------------|------|------------|
| Birmingham | Birmingham | 2006 | 8046 |

Educational Attainment of People Over 25 Years of Age



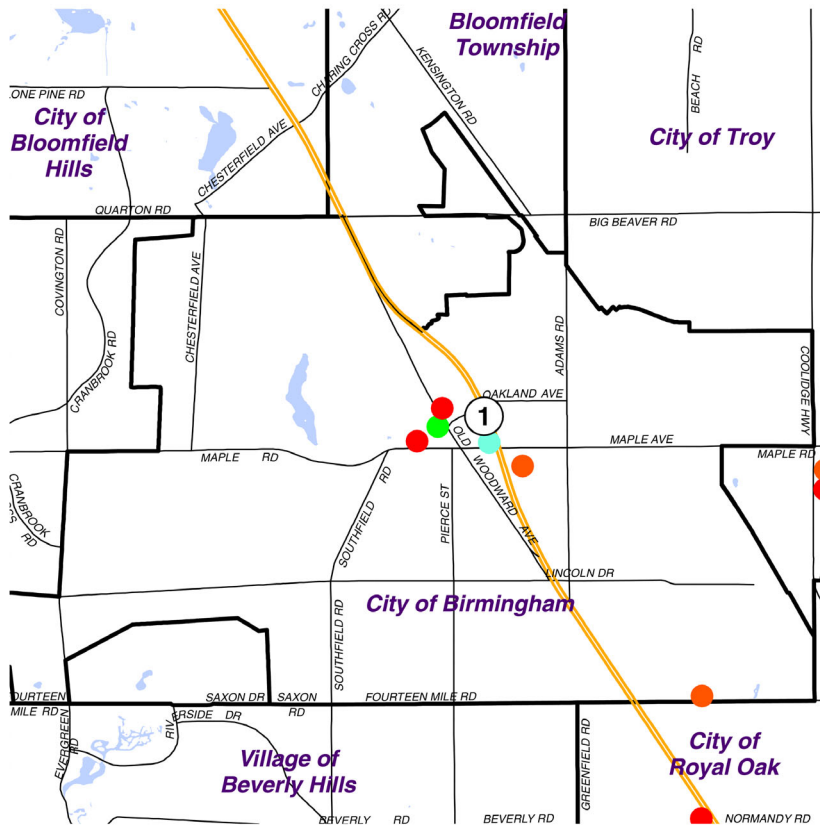
Population and Household Growth



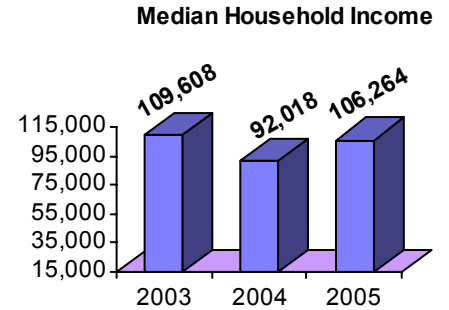
Source: SEMCOG

Local New Development Activity

Quality of Life

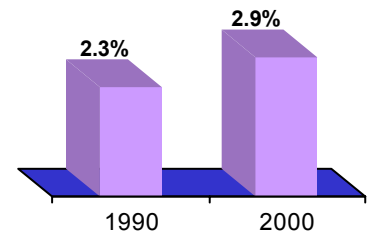


- Mixed-Use
- Office Bldg.
- Trans./Utility
- Medical Facility
- Institutional Facility
- Retail/Commercial Bldg.
- Residential/Commercial
- Leisure Activity/Accommodations
- Industrial/Warehouse/Hi-Tech

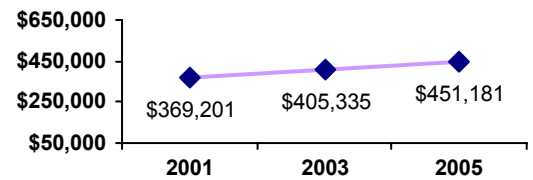


Source: Claritas

Poverty as a percent of Total Population



Average Housing Costs



Values based on number of homes sold
Source: O.C. Equalization

Top Employers

| Rank | CompanyName | Industry |
|------|---------------------------|---------------------------|
| 1 | Birmingham Public Schools | Primary education |
| 2 | McCann Worldgroup | Advertising and marketing |
| 3 | Kroger | Supermarket chain |
| 4 | Munder UK LLC | Investment counselors |
| 5 | City of Birmingham | Government services |
| 6 | Birmingham Theatre | Entertainment |
| 7 | Morgan Stanley DW Inc. | Securities broker |
| 8 | Peabody's of Birmingham | Restaurant |
| 9 | Century 21 Town & Country | Real estate managers |
| 10 | Shore Financial Services | Mortgage bankers |

Manufactured Housing

| Year | # of Parks | # of Units |
|------|------------|------------|
| 2000 | 0 | 0 |
| 2003 | 0 | 0 |
| 2005 | 0 | 0 |

Source: SEMCOG

For more information contact:
Daniel P. Hunter, Manager
 Oakland County Planning and Economic
 Development Services
 1200 North Telegraph Road, Dept. 412
 Pontiac, Michigan 48341
www.oakgov.com
 ph: 248 858 0720 fax: 248 975 9555

OAKLAND COUNTY PLANNING AND ECONOMIC DEVELOPMENT 2007