

Government Structure

Support Services

Mayor

John Davey (248) 644-1520

Manager

(248) 644-1520

Clerk

Amy L. Burton (248) 644-1520

2006 Tax Rates

School District	Homestead	Non Homestead
Birmingham	\$35.72	\$45.14
Bloomfield Hills	\$33.45	\$44.05

Source: www.oakgov.com /equal; rates per \$1000 State Equalized Value and published in December of each tax year

Private Schools / Colleges

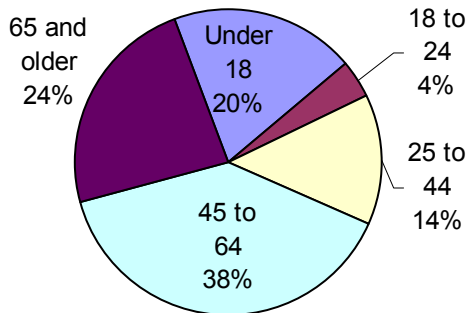
Private Schools

Academy of the Sacred Heart, Arcadia Montessori, Bloomfield Hills Montessori Center, Brother Rice Boys, Cranbrook Schools, Detroit Country Day Schools, Marian High, The Roeper School for Gifted Students, St. Hugo of the Hills, St. Regis

Colleges and Universities

Cranbrook Academy of Art

Population by Age



O
A
K
L
A
N
D
C
O
U
N
T
Y
P
L
A
N
N
I
N
G
A
N
D
E
C
O
N
O
M
I
C
D
E
V
E
L
O
P
M
E
N
T

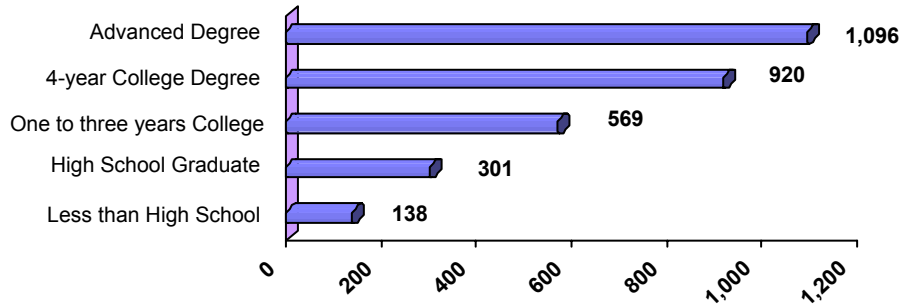
The City of Bloomfield Hills is an exclusive residential area with no industrial properties in the city and only modest commercial and office establishments located at the intersection of Long Lake and Woodward. Rolling hills, small lakes and wonderfully designed houses nestle on treed acreage. Within Bloomfield Hills is Vhay Lake which provides a beautiful residential setting. It is near the Bloomfield Open Hunt Club which has hosted horse shows for more than 50 years. It has been the training site for the Michigan Olympic Equestrian Team. Over 500 horses from around the world compete in the Motor City Horse Show making it one of the largest on the circuit. Landmarks such as the copper-turreted Fox and Hounds Restaurant and the Kingsley Hotel and Suites offer the finest of dining opportunities. The city is also home to the exclusive Bloomfield Hills Country Club, the internationally renowned Cranbrook Institute of Science, Cranbrook Academy of Art Museum, nature center and conservatory.

Public School Enrollment

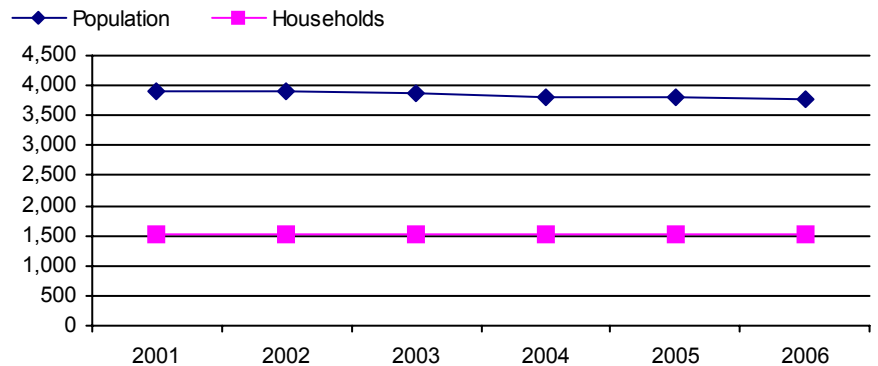
Community	School District	Year	Enrollment
Bloomfield Hills	Birmingham	2006	8046
Bloomfield Hills	Bloomfield Hills	2006	5949

Does not include public school academies

Educational Attainment of People Over 25 Years of Age

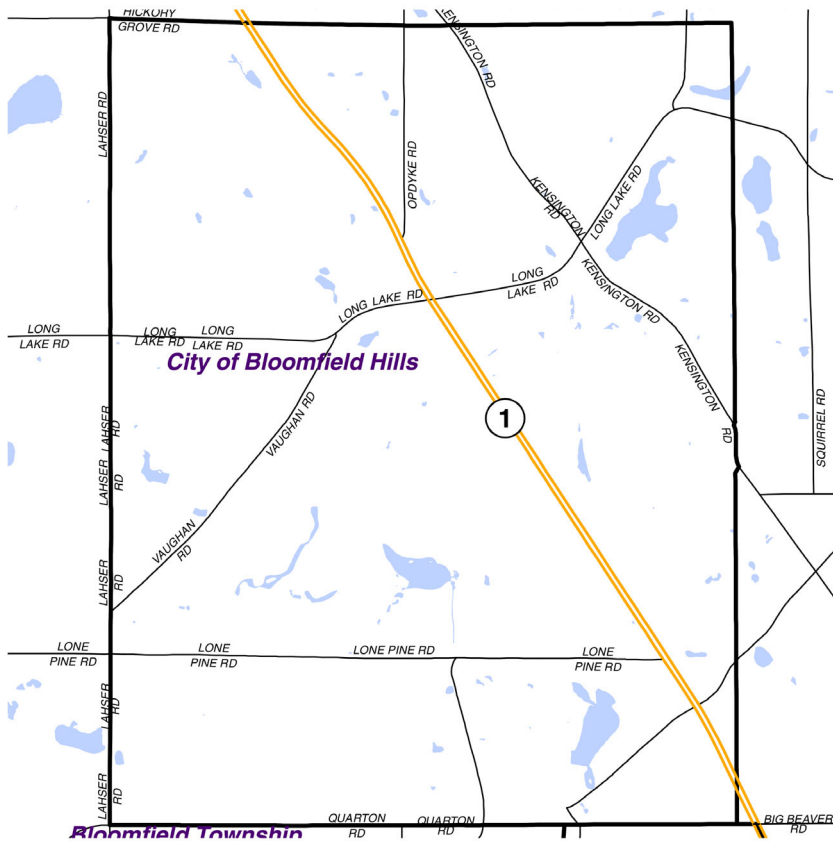


Population and Household Growth



Source: SEMCOG

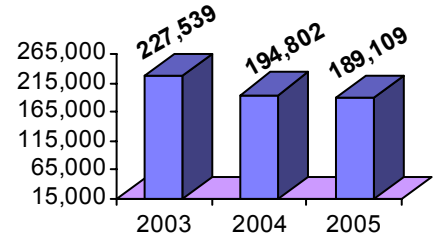
Local New Development Activity



- Mixed-Use
- Office Bldg.
- Trans./Utility
- Medical Facility
- Institutional Facility
- Retail/Commercial Bldg.
- Residential/Commercial
- Leisure Activity/Accommodations
- Industrial/Warehouse/Hi-Tech

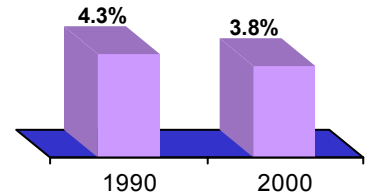
Quality of Life

Median Household Income

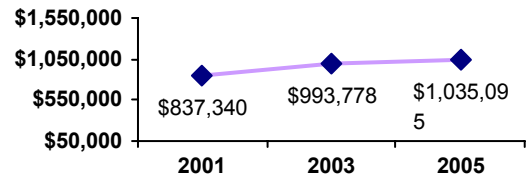


Source: Claritas

Poverty as a percent of Total Population



Average Housing Costs



Values based on number of homes sold
Source: O.C. Equalization

Top Employers

Rank	CompanyName	Industry
1	Cranbrook Academy of Art	Private school
2	Oakland Community College	Higher education
3	Taubman Centers	Real estate
4	Woodward Hills Nursing Center	Skilled nursing care facility
5	Pricewaterhousecoopers LLP	Certified public accountant
6	Pulte Homes Inc.	Mortgage bankers
7	Plunkett & Cooney PC	Law offices
8	Kingsley Hotel	Restaurant; hotel
9	U.S. Post Office	U.S. Postal Service
10	Dickinson Wright PLLC	Law offices

Manufactured Housing

Year	# of Parks	# of Units
2000	0	0
2003	0	0
2005	0	0

Source: SEMCOG

For more information contact:
Daniel P. Hunter, Manager
 Oakland County Planning and Economic
 Development Services
 1200 North Telegraph Road, Dept. 412
 Pontiac, Michigan 48341
www.oakgov.com
 ph: 248 858 0720 fax: 248 975 9555

OAKLAND COUNTY PLANNING AND ECONOMIC DEVELOPMENT 2007