

Government Structure

Support Services

Mayor

Brenda Lawrence (248) 796-5100

Administrator

James Scharret (248) 796-5110

Planning Director

Nicholas Banda (248) 796-5000

2006 Tax Rates

School District	Homestead	Non Homestead
Birmingham	\$44.35	\$53.77
Oak Park	\$39.42	\$57.42
Southfield	\$54.42	\$54.42

Source: www.oakgov.com /equal; rates per \$1000 State Equalized Value and published in December of each tax year

Private Schools / Colleges

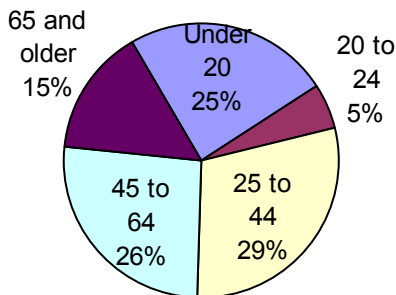
Private Schools

Akiva Hebrew Day School, Eagle Nest Montessori, Faith Christian, North Star Academy, St. Bede Catholic, St. Michael Catholic, Southfield Christian, Yeshiva Beth Yehudah, Yeshiva Darchei Torah, Paradize Academy, Ptach Michigan Chapter Inc, Academy of Detroit-North, AGBU Alex & Marie Manoogian School, The Oasis Academy

Colleges and Universities

Lawrence Technical University, Oakland Community College, Siena Heights University, University Of Phoenix (Oakland), Cleary College, National Institute of Technology, Cornerstone University

Population by Age



Source: ACS 2005

O
A
K
L
A
N
D
C
O
U
N
T
Y
P
L
A
N
N
I
N
G
A
N
D
E
C
O
N
O
M
I
C
D
E
V
E
L
O
P
M
E
N
T

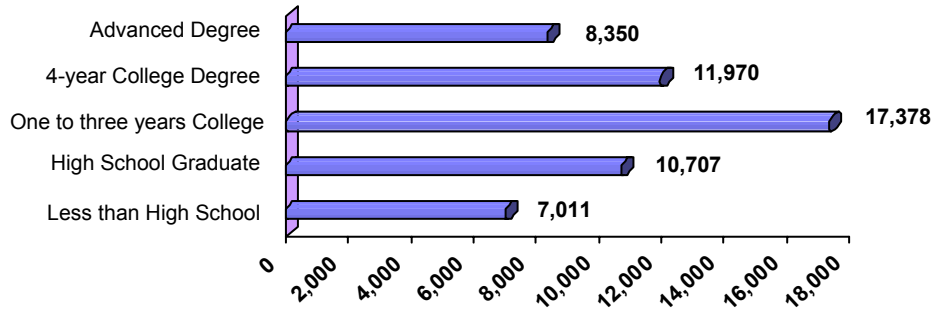
Southfield "The Center of It All" is an international city. You will find 140 Fortune 500 companies located in this growing community of 8,600 businesses. Perfectly situated between Michigan's major expressways and only 20 minutes from Metro Airport and downtown Detroit, Southfield appeals to Michigan's leading professional and commercial enterprises and leads Oakland County in foreign investment firms. Twenty-five percent of Oakland County's international firms and half of all Japanese companies are located in Southfield. Family living is the foundation of this community with a variety of desirable homes tucked away with easy access to expressways and office centers. Community pride is reflected in the neighborhoods, condominium groups and apartment complexes that enjoy Southfield's cosmopolitan atmosphere and central location.

Public School Enrollment

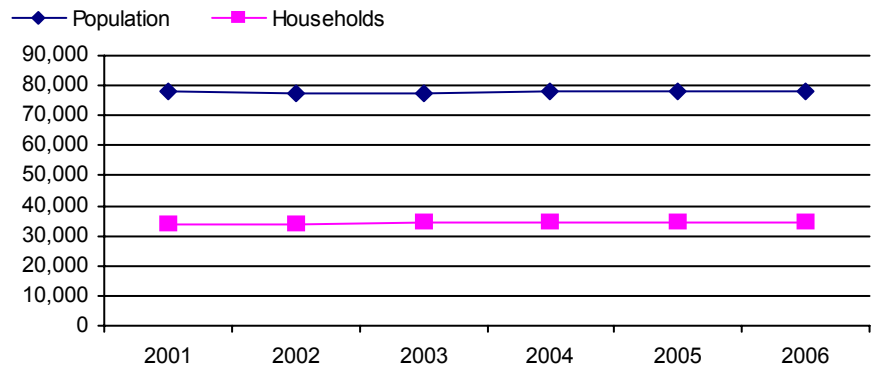
Does not include public school academies

Community	School District	Year	Enrollment
Southfield	Birmingham	2006	8046
Southfield	Oak Park	2006	3579
Southfield	Southfield	2006	9916

Educational Attainment of People Over 25 Years of Age



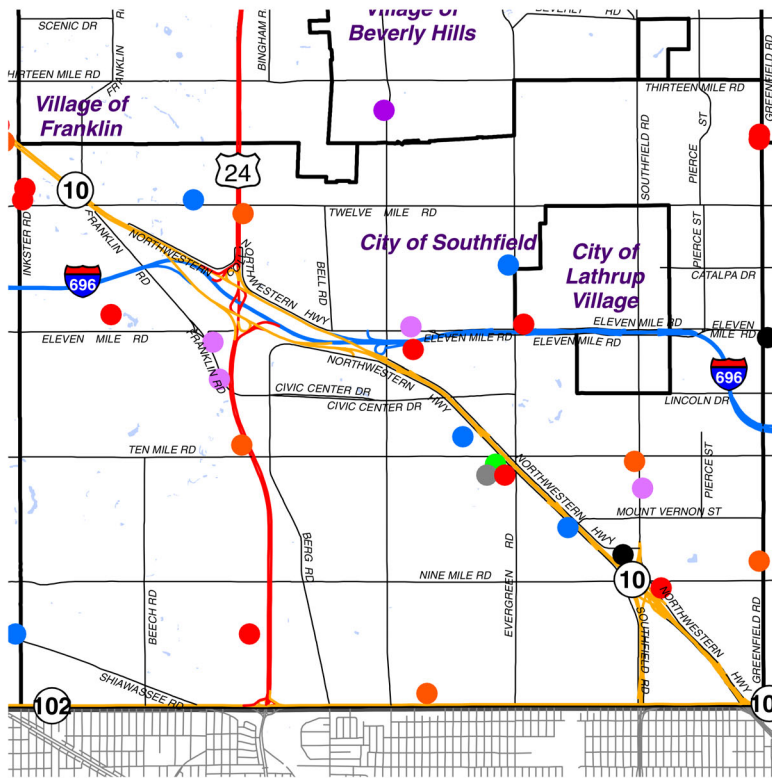
Population and Household Growth



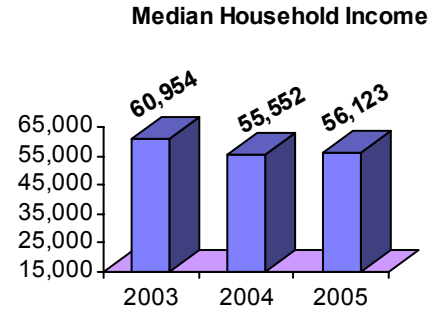
Source: SEMCOG

Local New Development Activity

Quality of Life

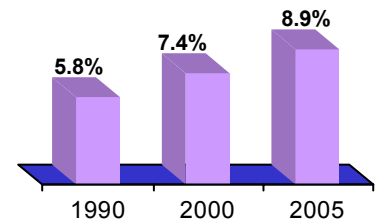


- Mixed-Use
- Institutional Facility
- Office Bldg.
- Retail/Commercial Bldg.
- Trans./Utility
- Residential/Commercial
- Medical Facility
- Leisure Activity/Accommodations
- Industrial/Warehouse/Hi-Tech

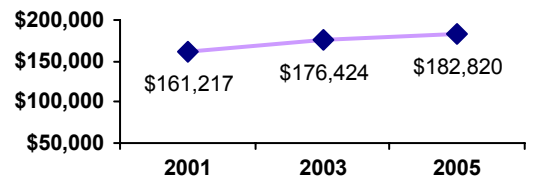


Source: Claritas

Poverty as a percent of Total Population



Average Housing Costs



Values based on number of homes sold
Source: O.C. Equalization

Top Employers

Rank	CompanyName	Industry
1	Providence Medical Centers	General medical & surgical hospitals
2	Human Capital Llc	Payroll, human resources services
3	Blue Cross Blue Shield of Michigan	Group health plan
4	Questor Partners Holdings	Management automotive stamping
5	Lear Corp	Automobile interiors and seats
6	Arcadia Services, Inc	Temporary help services
7	International Business Machines	Office equipment
8	Southfield Public School District	Primary education
9	Federal-Mogul Corporation	Motor vehicle parts and accessories
10	City of Southfield	Municipal offices
11	Lawrence Technological University	Higher education

Manufactured Housing

Year	# of Parks	# of Units
2000	3	775
2003	3	775
2005	3	775

Source: SEMCOG

For more information contact:
Daniel P. Hunter, Manager
 Oakland County Planning and Economic
 Development Services
 1200 North Telegraph Road, Dept. 412
 Pontiac, Michigan 48341
www.oakgov.com
 ph: 248 858 0720 fax: 248 975 9555

OAKLAND COUNTY PLANNING AND ECONOMIC DEVELOPMENT