

**Government Structure**

**Support Services**

**Supervisor**

David Flaisher (248) 451-4800

**Planning Director**

Douglas Plachicinski (248) 451-4876

**Clerk**

Sharon Law (248) 451-4848

**2006 Tax Rates**

School District	Homestead	Non Homestead
Birmingham	\$36.98	\$46.40
Bloomfield Hills	\$34.71	\$45.32
Farmington	\$35.81	\$44.90
Pontiac	\$26.51	\$44.51
Walled Lake	\$31.95	\$47.95
Waterford	\$28.83	\$46.83
West Bloomfield	\$34.88	\$49.28

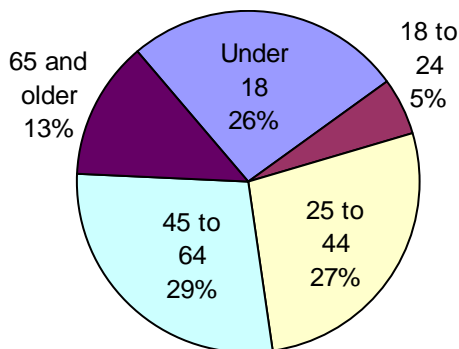
Source: www.oakgov.com /equal; rates per \$1000 State Equalized Value and published in December of each tax year

**Private Schools / Colleges**

**Private Schools**

Bloomfield Maples Montessori, Brookfield Academy, Jewish Academy of Metro Detroit, Learning Circle Academy

**Population by Age**



O  
A  
K  
L  
A  
N  
D  
C  
O  
U  
N  
T  
Y  
P  
L  
A  
N  
N  
I  
N  
G  
A  
N  
D  
E  
C  
O  
N  
O  
M  
I  
C  
D  
E  
V  
E  
L  
O  
P  
M  
E  
N  
T

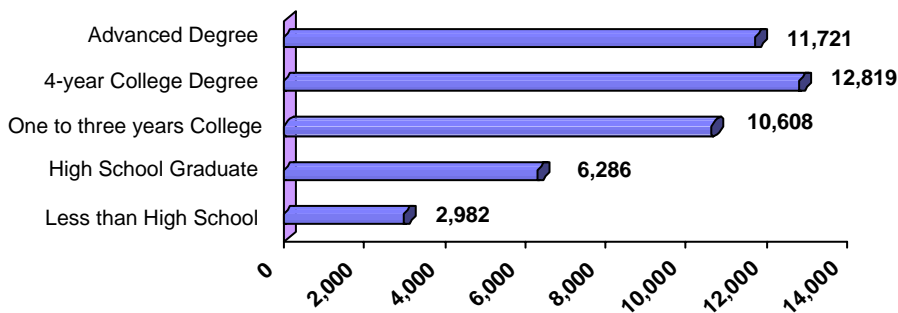
Rebuilt from the days of lake cottages, West Bloomfield's rolling hills provide the setting for the beautiful and lavish homes there today. Development pressures and vanishing farmland have helped residents create a sensitivity to environmental quality and preservation of natural resources, which contributes to the overall quality and character of the Township. Their 426-acre park system offer residents more than 250 programs and outdoor recreational activities throughout the year. The Jewish Community Center is a recreational, educational and cultural establishment all under one roof. West Bloomfield has no designated downtown. Major shopping is found on Orchard Lake Road between Pontiac Trail and 14 Mile Road where there are many restaurants (some with ethnic cuisine), small malls, boutique shops and business offices. All this helped earn West Bloomfield a rank of 14th in Money Magazine's Top 100 Best Places to Live for 2006.

**Public School Enrollment**

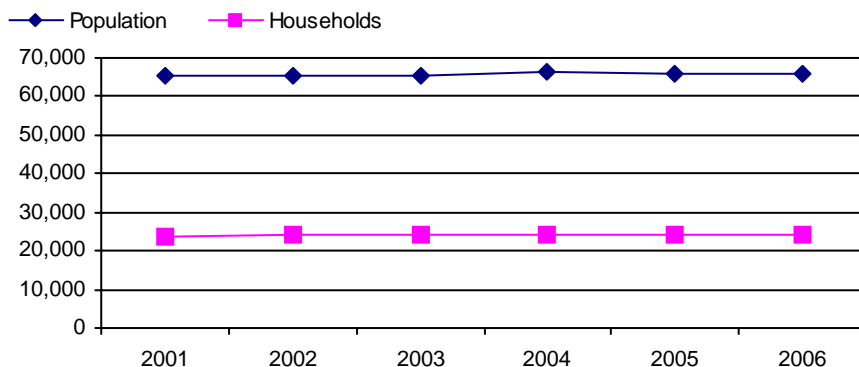
Does not include public school academies

Community	School District	Year	Enrollment
West Bloomfield Twp	Birmingham	2006	8046
West Bloomfield Twp	Bloomfield Hills	2006	5949
West Bloomfield Twp	Farmington	2006	12380
West Bloomfield Twp	Pontiac	2006	9742
West Bloomfield Twp	Walled Lake	2006	15725
West Bloomfield Twp	Waterford	2006	11548
West Bloomfield Twp	West Bloomfield	2006	6957

**Educational Attainment of People Over 25 Years of Age**



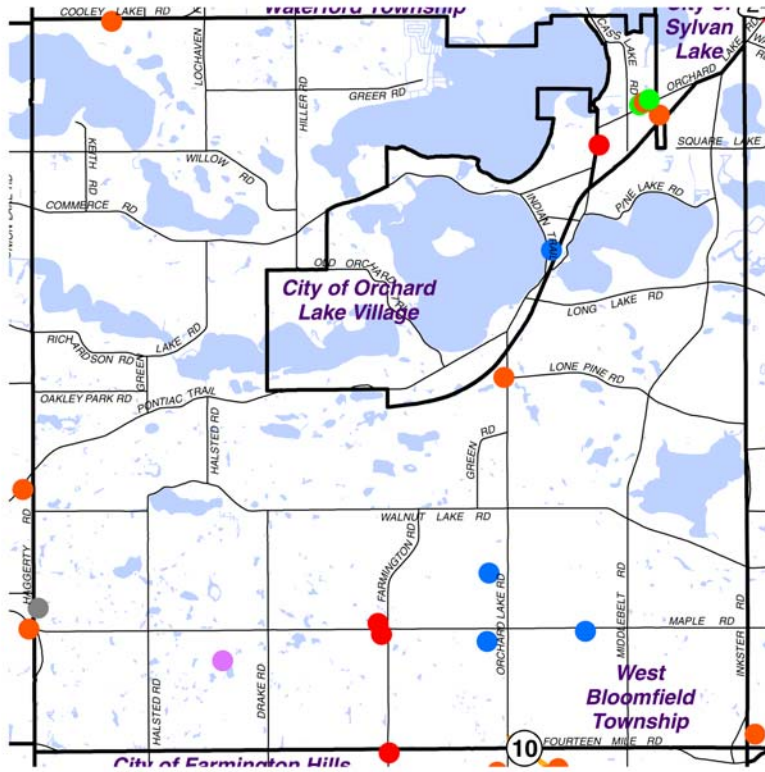
**Population and Household Growth**



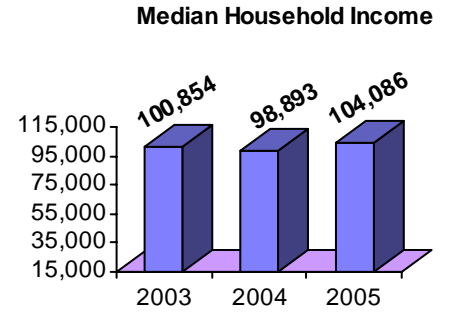
Source: SEMCOG

Local New Development Activity

Quality of Life

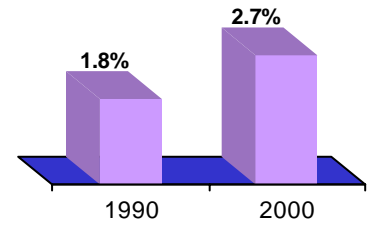


OAKLAND COUNTY PLANNING AND ECONOMIC DEVELOPMENT

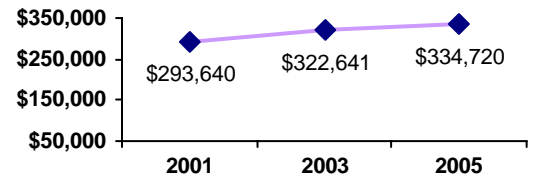


Source: Claritas

Poverty as a percent of Total Population



Average Housing Costs



Values based on number of homes sold  
Source: O.C. Equalization

Top Employers

Rank	CompanyName	Industry
1	Jewish Community Center of Metro Detroit	Religious organizations
2	West Bloomfield School District	Primary education
3	Walled Lake School District	Primary education
4	Temple Israel	Religious organizations
5	Tam O'Shanter Country Club	Golf courses and country clubs
6	West Bloomfield Nursing Center	Skilled nursing care facilities
7	Bloomfield Hills School District	Primary education
8	Knollwood Country Club	Golf courses and country clubs
9	National Credit Corporation	Short-term business credit
10	West Bloomfield Public Library	Library

Manufactured Housing

Year	# of Parks	# of Units
2000	0	0
2003	0	0
2005	0	0

Source: SEMCOG

For more information contact:  
 Daniel P. Hunter, Manager  
 Oakland County Planning and Economic  
 Development Services  
 1200 North Telegraph Road, Dept. 412  
 Pontiac, Michigan 48341  
 www.oakgov.com  
 ph: 248 858 0720 fax: 248 975 9555