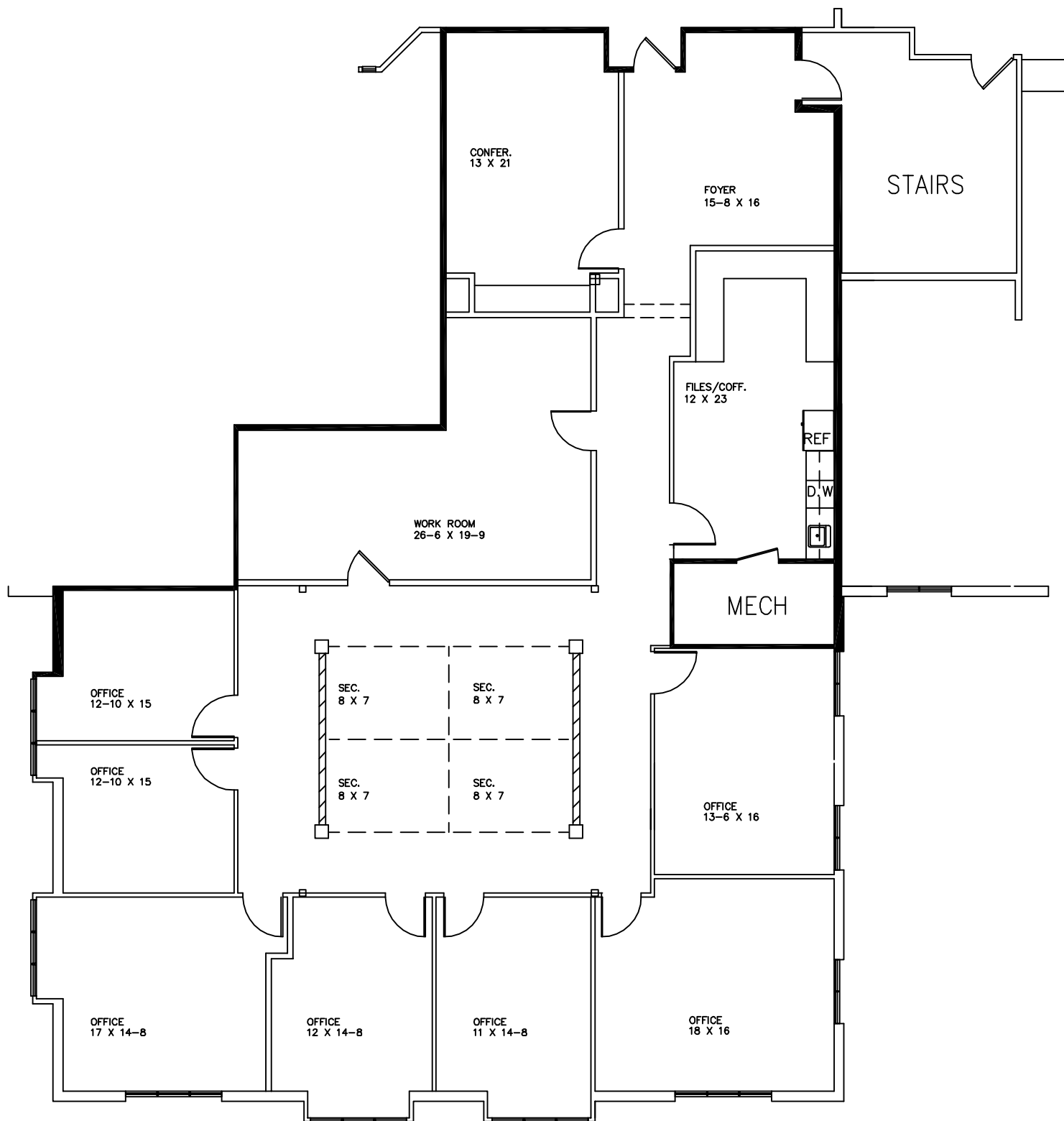


GOVERNORS PLACE
 33 BLOOMFIELD HILLS PARKWAY
 BLOOMFIELD HILLS, MICHIGAN
 AVAILABLE FOR LEASE
 SUITE #220
 APPROX. 4,195 R.S.F.
 4-22-2011



SECOND FLOOR PLAN

SCALE: 1/4" = 1'-0"



DEVELOPMENT & MANAGEMENT COMPANY

FOR INFORMATION:
 CALL
 MICHELLE RILEY
 248-647-7500