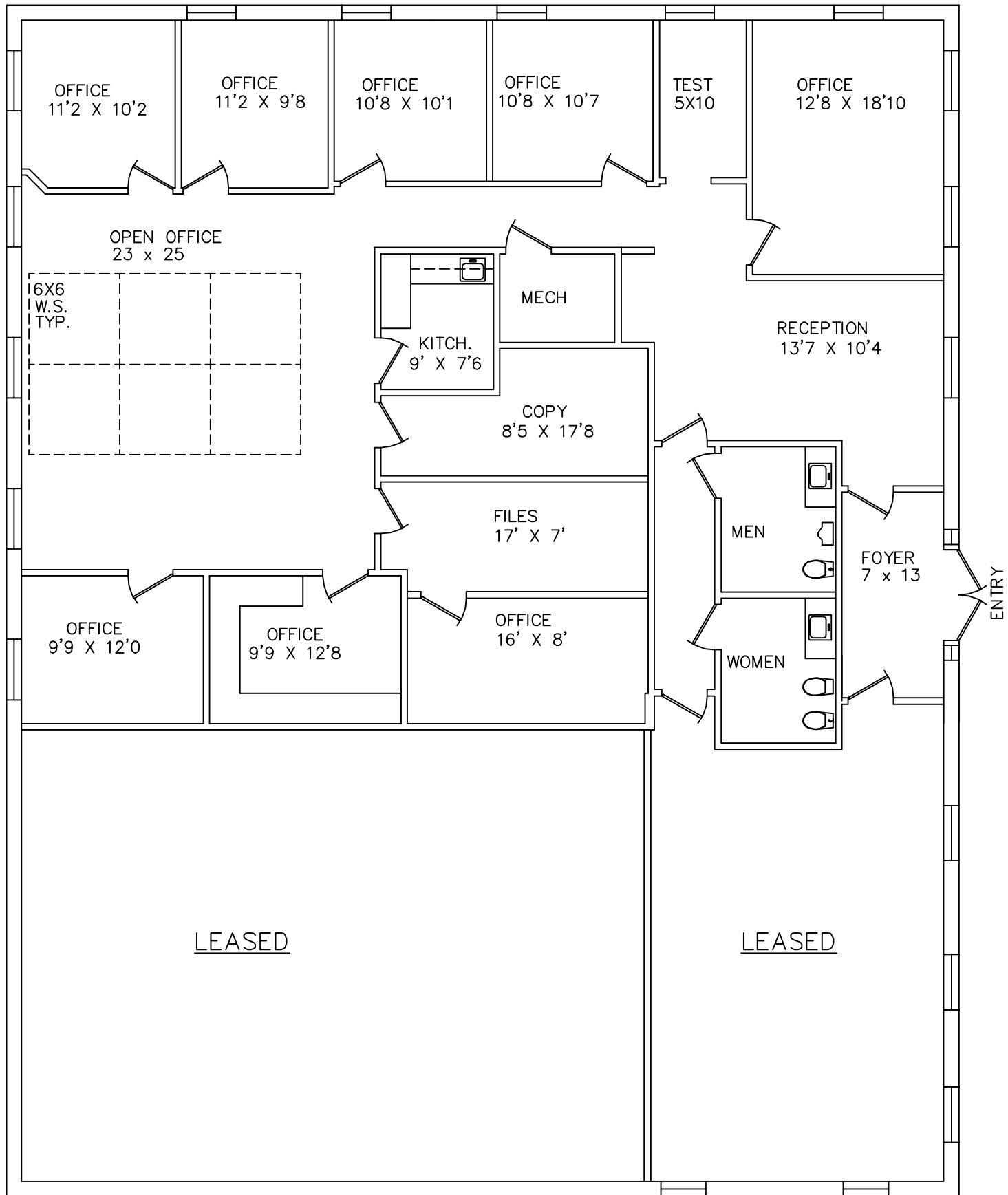


QUADRANGLE

29840 TELEGRAPH RD.
SOUTHFIELD, MI.

AVAILABLE FOR LEASE
2,970 S.F.



Beachum & Poeser

(PLAN NOT TO SCALE)

DEVELOPMENT & MANAGEMENT CORPORATION

CALL:
MICHELLE RILEY
248-647-7500