

Bloomfield Hills - Governor's Place Building - 3,677 Sq. Ft



PROPERTY ADDRESS:

33 Bloomfield Hills Parkway
Suite 260
Bloomfield Hills, MI 48304

SUITE SIZE: 3,677 Sq. Ft.

AVAILABLE: Immediately

FLOORPLAN: See page 2

LEASE RATE: Negotiable

LEASE TERM: 5 year term

DEMOGRAPHICS:

Oakland County, MI:

Population (2015): 1,243,970

Median household income (2015): \$67,465

Median house value (2015): \$178,900

Bloomfield Hills, MI:

Population (2015): 42,112

Median household income (2015): \$112,154

Median house value (2015): \$350,600

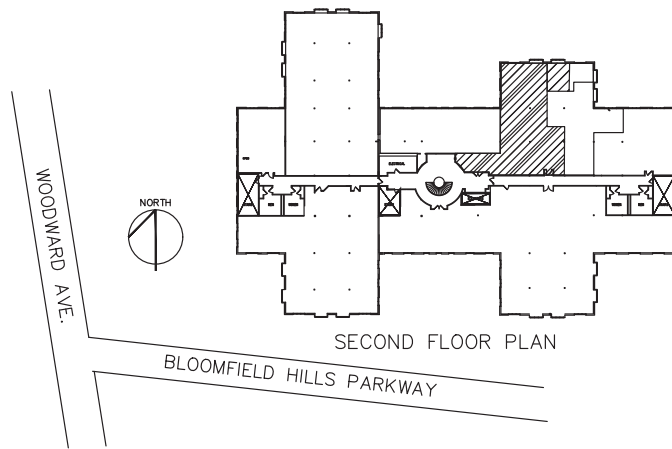


SUITE DESCRIPTION:

Nicely sized 2nd floor suite available at the prestigious Governor's Place.

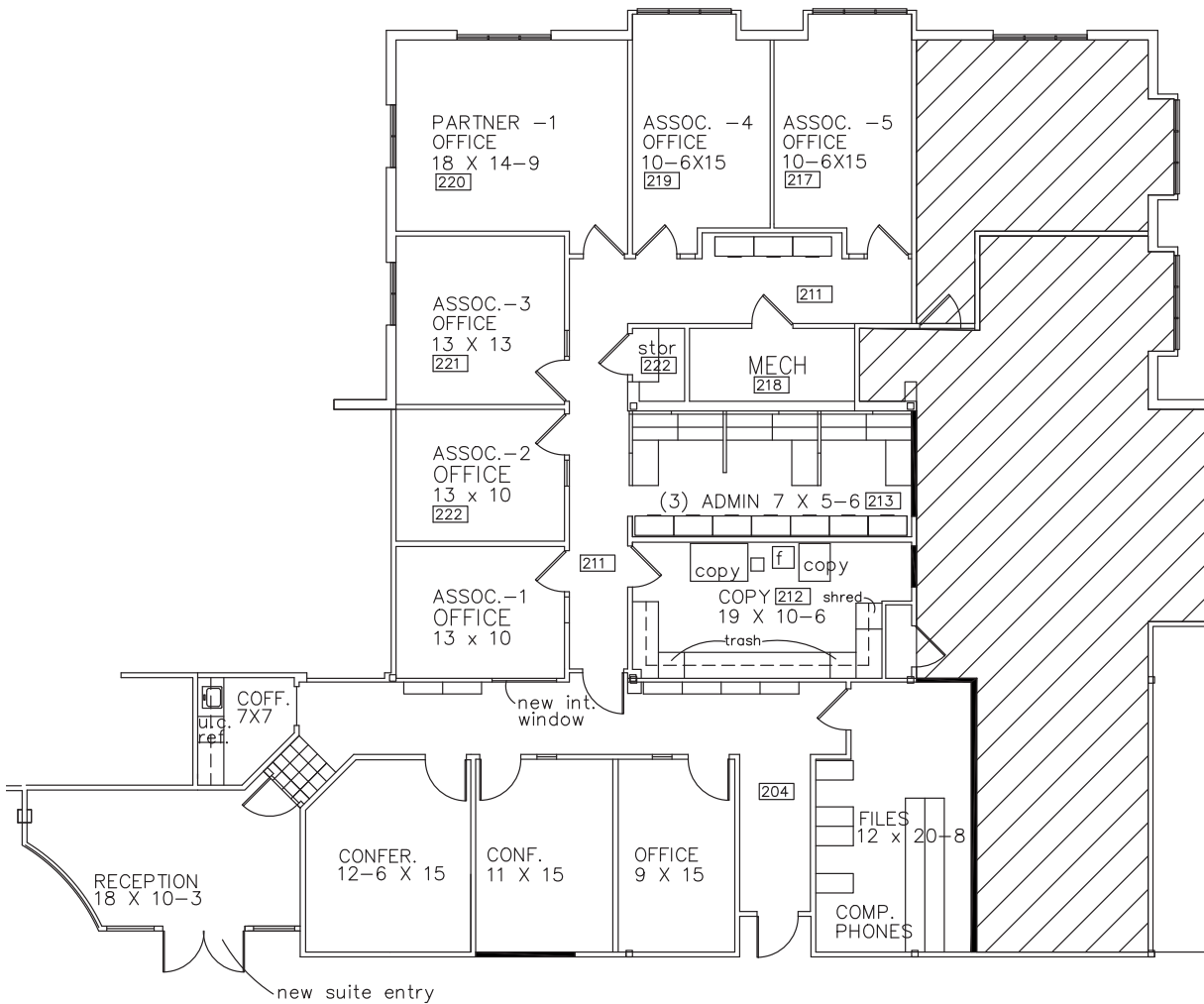
Suite features:

- 4 windowed offices
- 3 non-windowed offices
- 2 conference rooms
- Copy room
- Open admin area
- Reception area
- Other features include windows that open, individual control over HVAC and plenty of convenient parking.



APPROX. 3,677 R.S.F.
GOVERNORS PLACE

33 BLOOMFIELD HILLS PARKWAY
BLOOMFIELD HILLS, MICHIGAN



SUITE 260
SCALE: 1/8"=1'-0"

Beachum & Roeser

DEVELOPMENT & MANAGEMENT CO.

CONTACT:
BILL BEACHUM
248-647-7500