

Bingham Farms - Georgetowne 31700 Building - 2,641 Sq. Ft



PROPERTY ADDRESS:

31700 Telegraph Road
Suite 100
Bingham Farms, MI 48025

SUITE SIZE: 2,641 Sq. Ft.
AVAILABLE: Immediately
FLOORPLAN: See page 2
LEASE RATE: Negotiable
LEASE TERM: Negotiable
DEMOGRAPHICS:

Oakland County, MI:

Population (2015): 1,243,970
Median household income (2015): \$67,465
Median house value (2015): \$178,900

Bingham Farms, MI:

Population (2015): 1,133
Median household income (2015): \$102,083
Median house value (2015): \$361,500

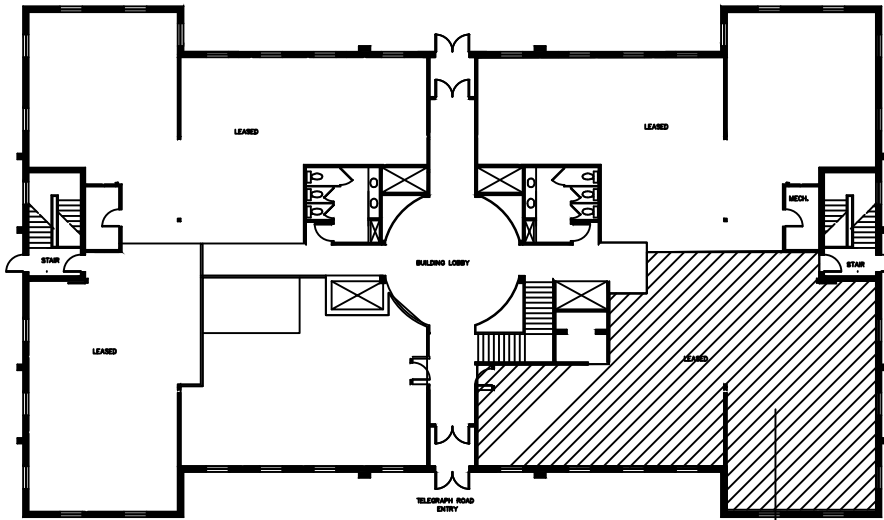


SUITE DESCRIPTION:

Move in ready Medical Suite – immediately available.

Suite features:

- Large lobby/waiting area upon entry
- Reception area
- 5 windowed exam rooms
- 1 non-windowed exam room
- A windowed conference room
- 1 windowed office
- Employee lounge with sink and countertop
- File room
- Sterilization room
- A dark room
- Laundry room
- Private lavatory



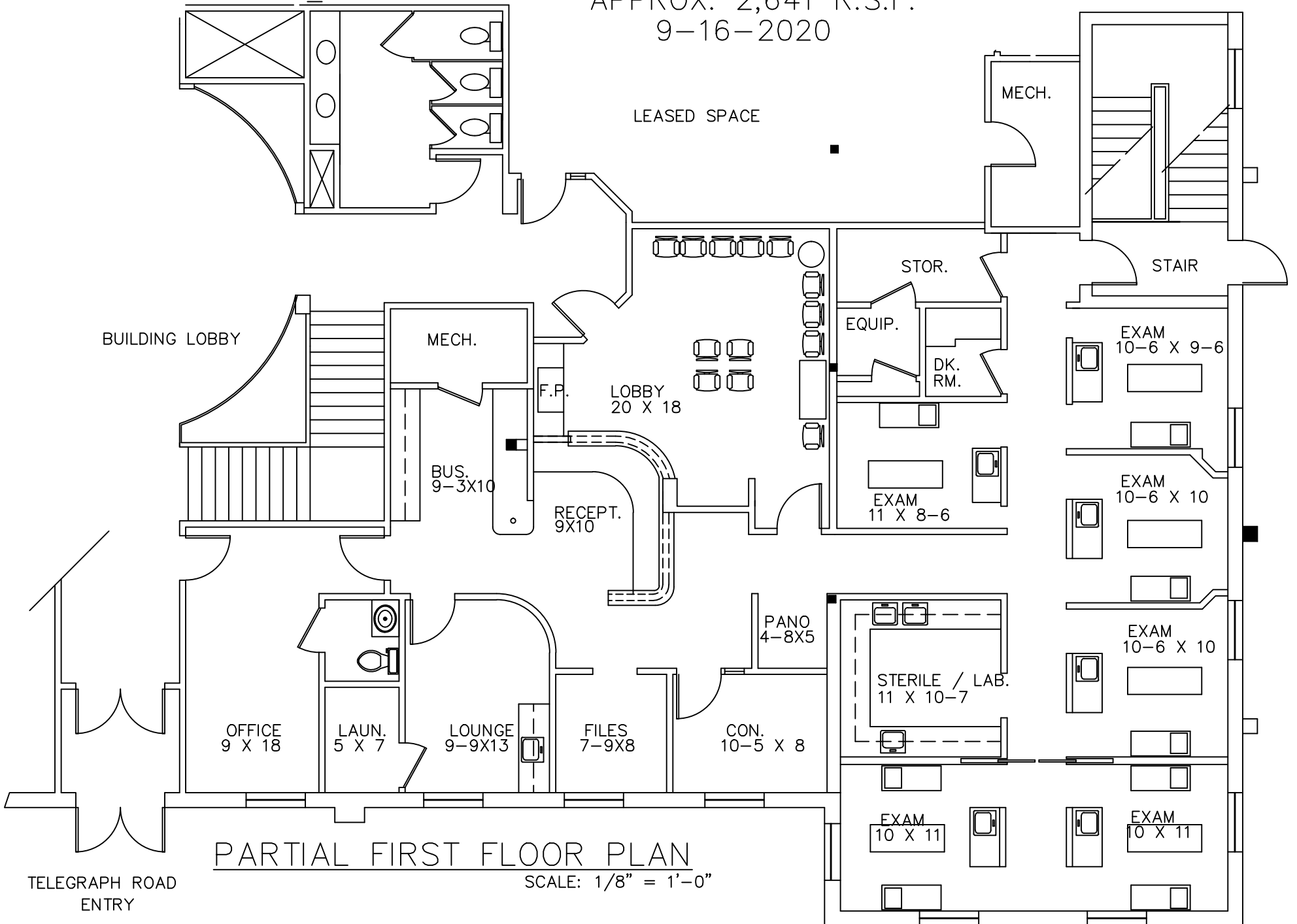
SUITE LOCATION

TELEGRAPH ROAD

GEORGETOWNE EXECUTIVE OFFICES

31700 TELEGRAPH ROAD BINGHAM FARMS, MI
 AVAILABLE FOR LEASE
 FIRST FLOOR SPACE

SUITE # 100
 APPROX. 2,641 R.S.F.
 9-16-2020



PARTIAL FIRST FLOOR PLAN

SCALE: 1/8" = 1'-0"

Beachum & Poeser

DEVELOPMENT & MANAGEMENT CORPORATION

CALL:
 BILL BEACHUM
 248-647-7500