

Bingham Farms - Georgetowne 31700 Building - 1,279 Sq. Ft



PROPERTY ADDRESS:

31700 Telegraph Road
Suite 210
Bingham Farms, MI 48025

SUITE SIZE: 1,279 Sq. Ft.

AVAILABLE: Immediately

FLOORPLAN: See page 2

LEASE RATE: Negotiable

LEASE TERM: Negotiable

DEMOGRAPHICS:

Oakland County, MI:

Population (2015): 1,243,970

Median household income (2015): \$67,465

Median house value (2015): \$178,900

Bingham Farms, MI:

Population (2015): 1,133

Median household income (2015): \$102,083

Median house value (2015): \$361,500



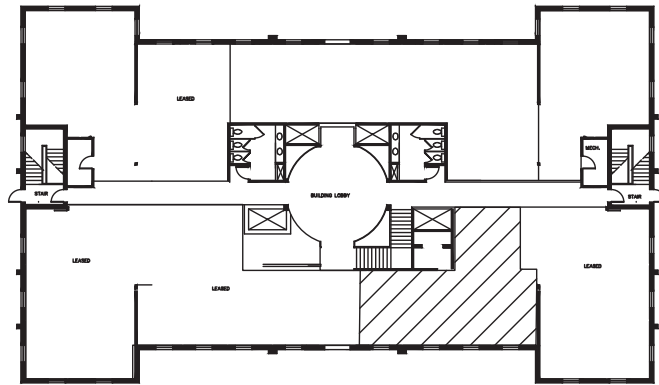
SUITE DESCRIPTION:

Second floor suite available at the beautiful Georgetowne Executive Office Building. This suite but can be customized for your individual needs.

Suite features:

- 3 windowed offices
- kitchen with cabinets
- Reception area/waiting room entrance

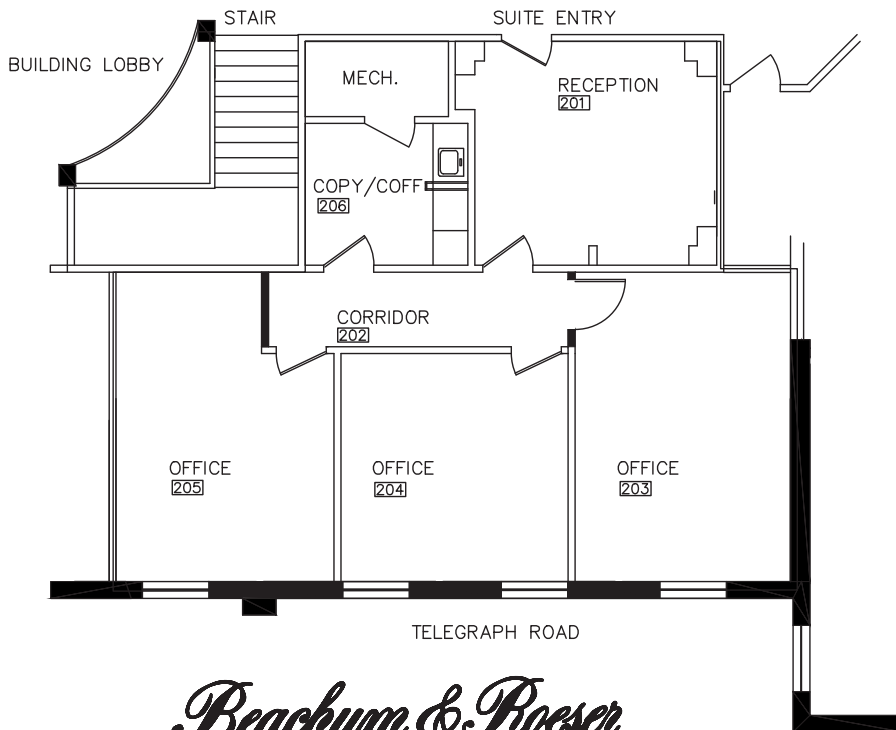
Other features include: windows that open; individual control over HVAC; plenty of convenient parking just steps from the building entrance.



TELEGRAPH ROAD

GEORGETOWNE EXECUTIVE OFFICES

31700 TELEGRAPH ROAD - BINGHAM FARMS, MI
SECOND FLOOR SPACE
APPROX 1,279 R.S.F.
SUITE 210



Beachum & Poeser

DEVELOPMENT & MANAGEMENT CORPORATION

CALL:

BILL BEACHUM
248-647-7500