

TELEGRAPH ROAD

GEORGETOWNE EXECUTIVE OFFICES

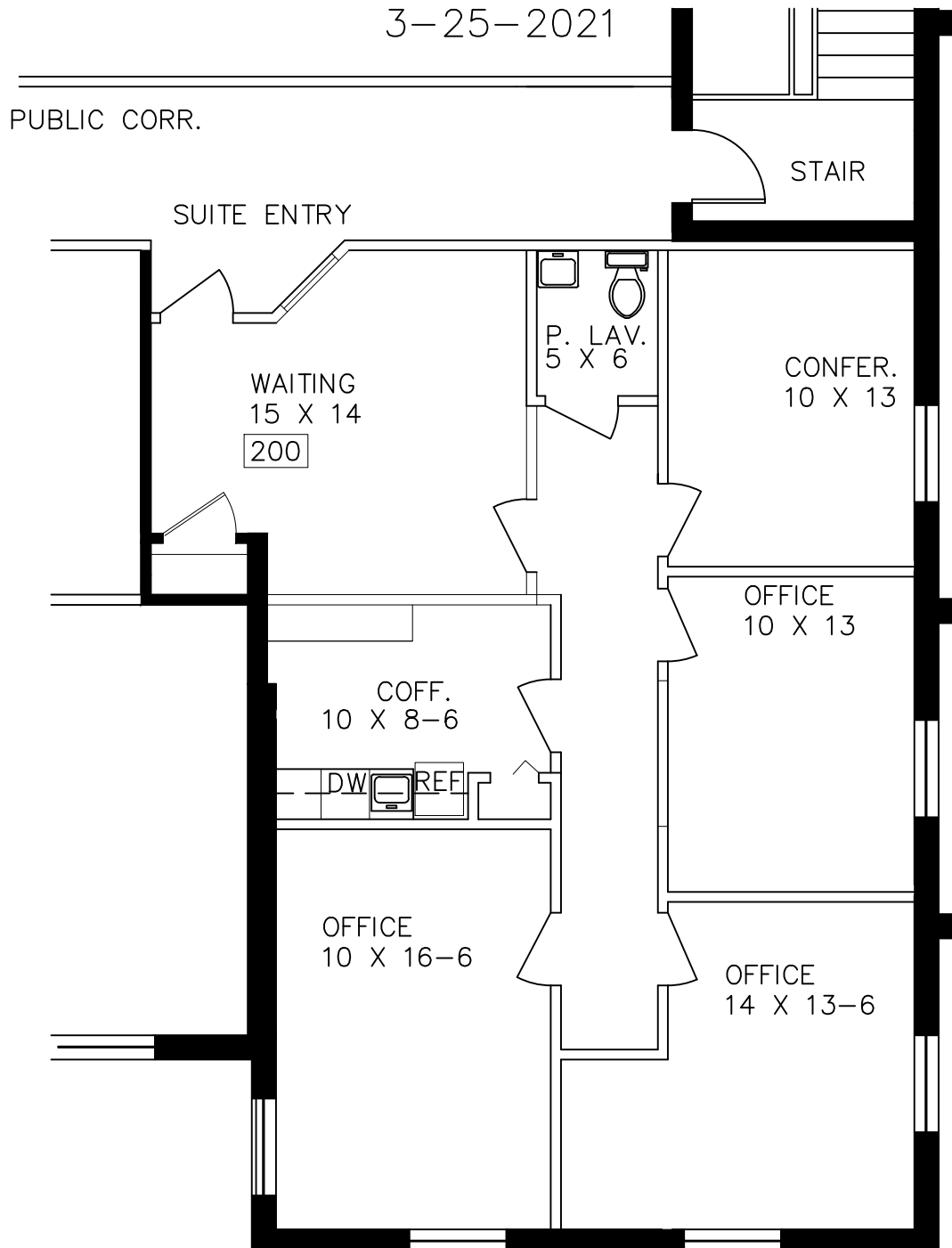
31700 TELEGRAPH ROAD – BINGHAM FARMS, MI
AVAILABLE FOR LEASE

SUITE # 230

AS-BUILT

APPROX. 1,333 RSF.

3-25-2021



Beachum & Roeser

DEVELOPMENT & MANAGEMENT CORPORATION

CALL:

BILL BEACHUM

248-647-7500