

Bingham Farms - Georgetowne 31700 Building - 1,103 Sq. Ft



PROPERTY ADDRESS:

31700 Telegraph Road
Suite 235
Bingham Farms, MI 48025

SUITE SIZE: 1,103 Sq. Ft.
AVAILABLE: Immediately
FLOORPLAN: See page 2
LEASE RATE: Negotiable
LEASE TERM: Negotiable
DEMOGRAPHICS:

Oakland County, MI:

Population (2015): 1,243,970
Median household income (2015): \$67,465
Median house value (2015): \$178,900

Bingham Farms, MI:

Population (2015): 1,133
Median household income (2015): \$102,083
Median house value (2015): \$361,500

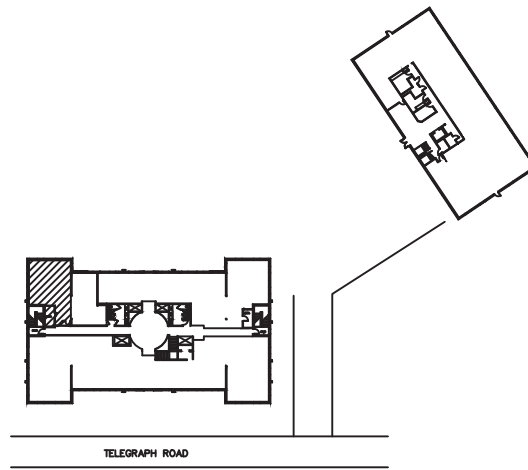


SUITE DESCRIPTION:

Perfect office suite available at the beautiful Georgetowne Professional Office building.

Suite features:

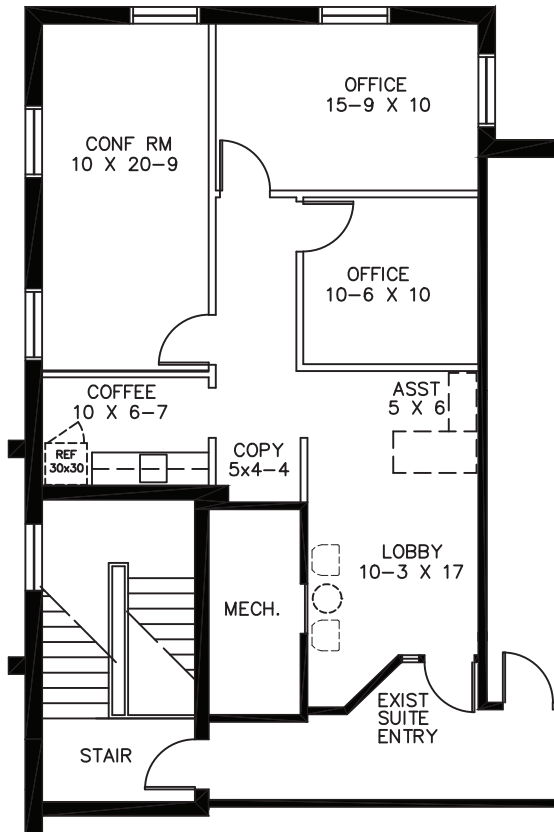
- 1 windowed, corner office
- 1 non-windowed office
- A large, windowed corner conference room
- Large lobby upon entrance to suite
- Admin station
- Copy room
- Coffee room refrigerator and sink
- Other features include: Windows that open; individual control over HVAC and plenty of convenient parking, just steps from building entrance.



GEORGETOWNE EXECUTIVE OFFICES

31700 TELEGRAPH ROAD – BINGHAM FARMS, MI
AVAILABLE FOR LEASE

AS-BUILT
SUITE #235
SECOND FLOOR
APPROX. 1,103 RSF.
1-22-2021



Beachum & Poeser

DEVELOPMENT & MANAGEMENT CORPORATION

CALL:
BILL BEACHUM
248-647-7500