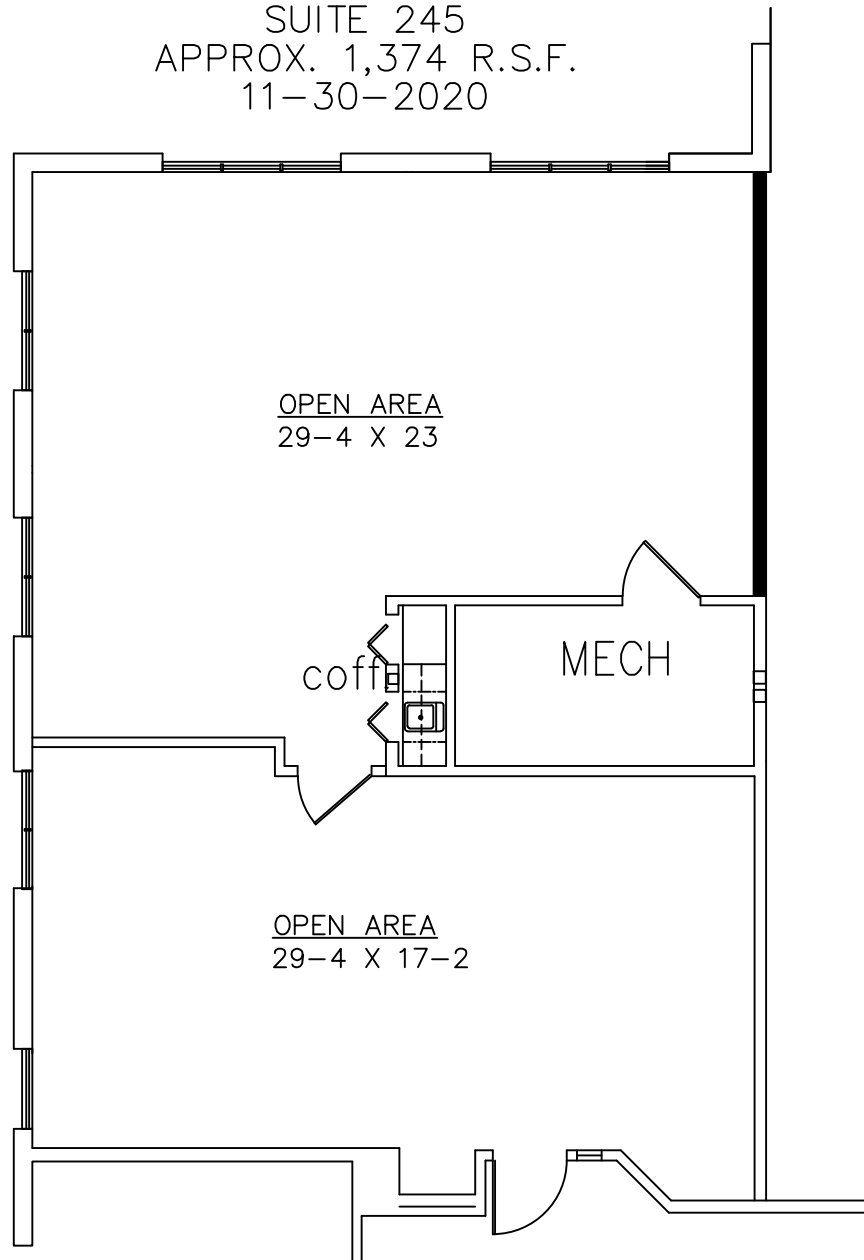


GOVERNORS PLACE

33 BLOOMFIELD HILLS PARKWAY
 BLOOMFIELD HILLS, MI.
 AVAILABLE FOR LEASE
 SUITE 245
 APPROX. 1,374 R.S.F.
 11-30-2020



PARTIAL SECOND FLOOR PLAN

SCALE: 1/8" = 1'-0"

Beachum & Roeser

MANAGEMENT CORPORATION

CALL:

BILL BEACHUM
 248-647-7500
 (PLAN NOT TO SCALE)