

## Bingham Farms - Jamestowne 31000 Building - 1,830 Sq. Ft



**PROPERTY ADDRESS:**

31000 Telegraph Road  
Suite 110  
Bingham Farms, MI 48025

**SUITE SIZE:** 1,830 Sq. Ft.

**AVAILABLE:** Immediately

**FLOORPLAN:** See page 2

**LEASE RATE:** Negotiable

**LEASE TERM:** 5 year term

**DEMOGRAPHICS:**

***Oakland County, MI:***

Population (2015): 1,243,970

Median household income (2015): \$67,465

Median house value (2015): \$178,900

***Bingham Farms, MI:***

Population (2015): 1,133

Median household income (2015): \$102,083

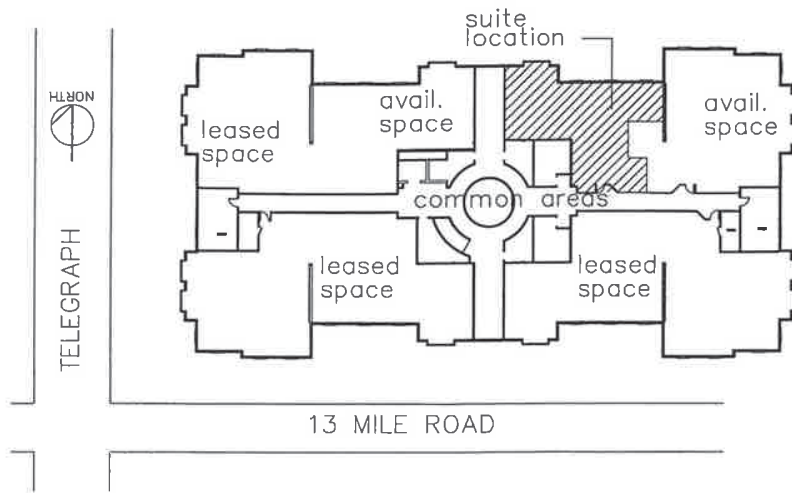
Median house value (2015): \$361,500



**SUITE DESCRIPTION:**

- Waiting room, area for receptionist/files
- 2 large windowed offices
- 3rd large open office in middle of suite with (2) windows that can be converted to (2) windowed offices
- Open area toward the back waiting to be customized to your individual needs along with a lounge nearby
- This suite has capped plumbing and could be converted to a medical office.

Other features include: individual control over HVAC; windows that open and plenty of convenient parking.



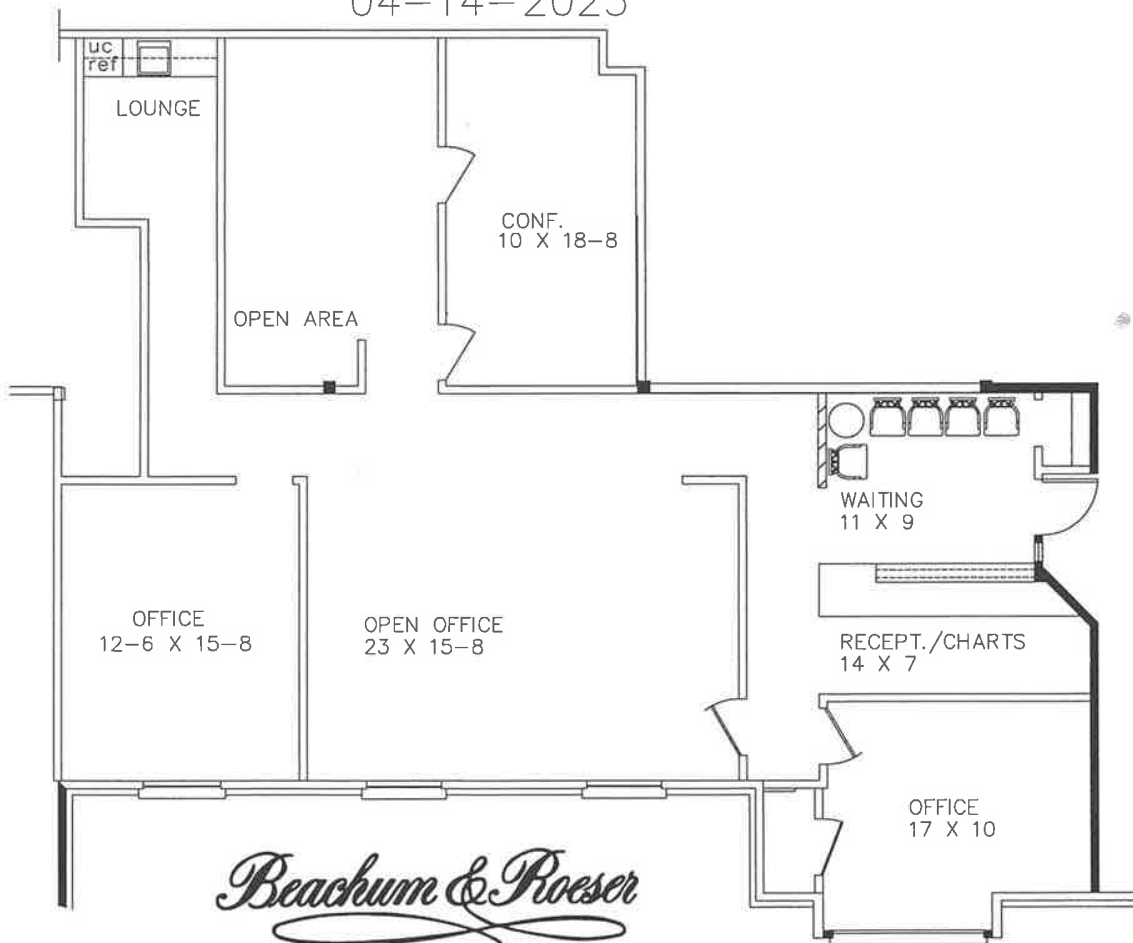
## JAMESTOWNE EXECUTIVE OFFICES

31000 TELEGRAPH ROAD, BINGHAM FARMS, MI.

SUITE 110

1,830 RENTABLE SQUARE FEET

04-14-2025



*Beachum & Roeser*

**MANAGEMENT AND DEVELOPMENT**

FOR INFORMATION:  
CONTACT

BILL BEACHUM

248-647-7500

BILL@BEACHUMROESER.COM