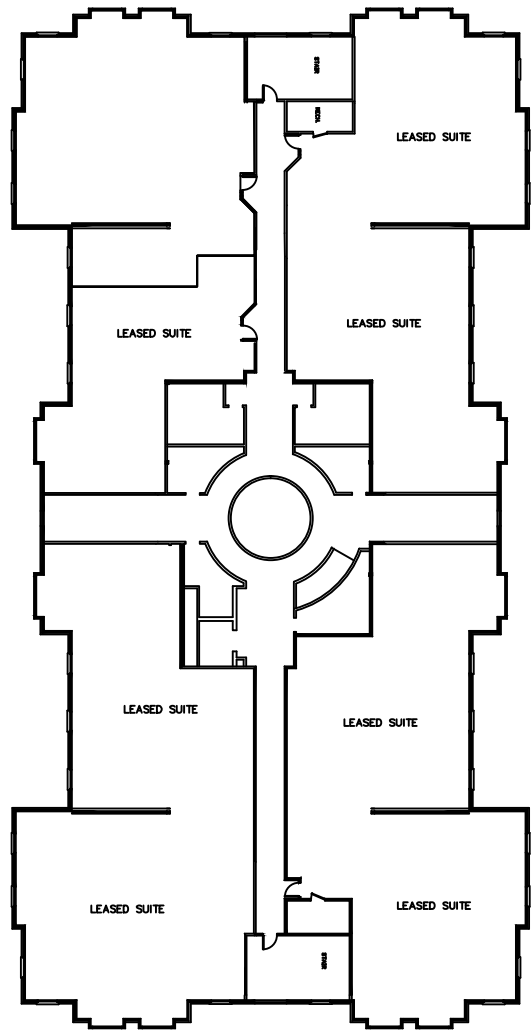


JAMESTOWNE EXECUTIVE OFFICES
31100 TELEGRAPH ROAD, BINGHAM FARMS, MI.
MAIN FLOOR AND TERRACE LEVEL



JAMESTOWNE EXECUTIVE OFFICES
31100 TELEGRAPH ROAD, BINGHAM FARMS, MI.
FIRST AND SECOND FLOOR SUITES



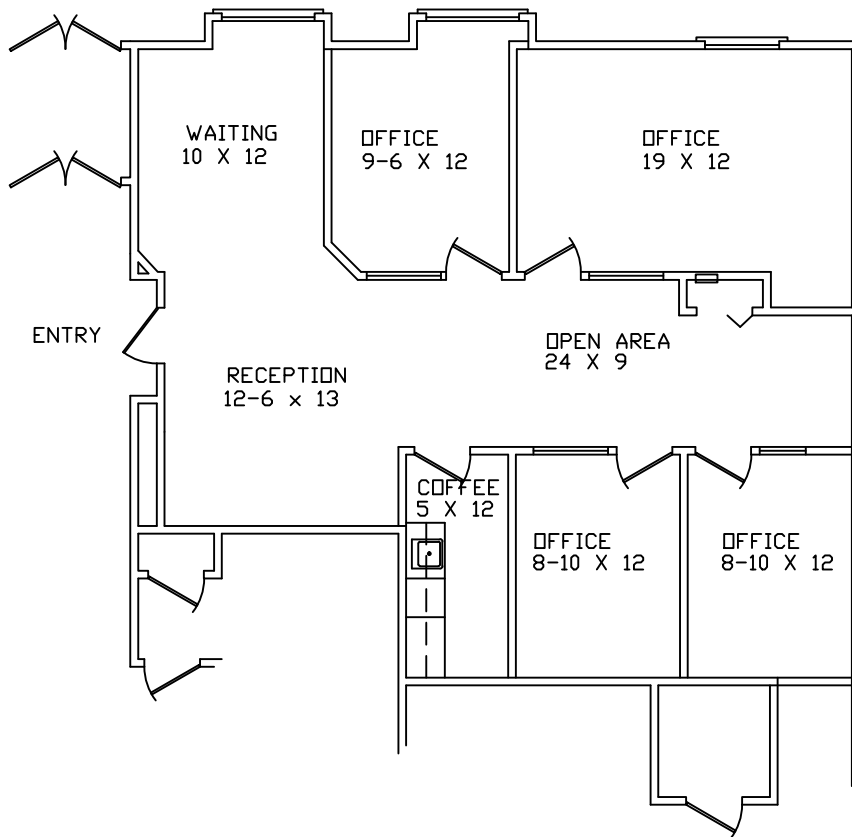
13 MILE ROAD

TELEGRAPH ROAD

JAMESTOWNE EXECUTIVE OFFICES

31100 TELEGRAPH ROAD, BINGHAM FARMS, MI.

AVAILABLE FOR LEASE
SUITE #210
APPROX. 1,320 R.S.F.
10-2-2020



PARTIAL FIRST FLOOR PLAN

SCALE: 1/8" = 1'-0"

Beachum & Roeser

DEVELOPMENT AND MANAGEMENT COMPANY

FOR INFORMATION
CALL:
BILL BEACHUM
248-647-7500