

JAMESTOWNE EXECUTIVE OFFICES

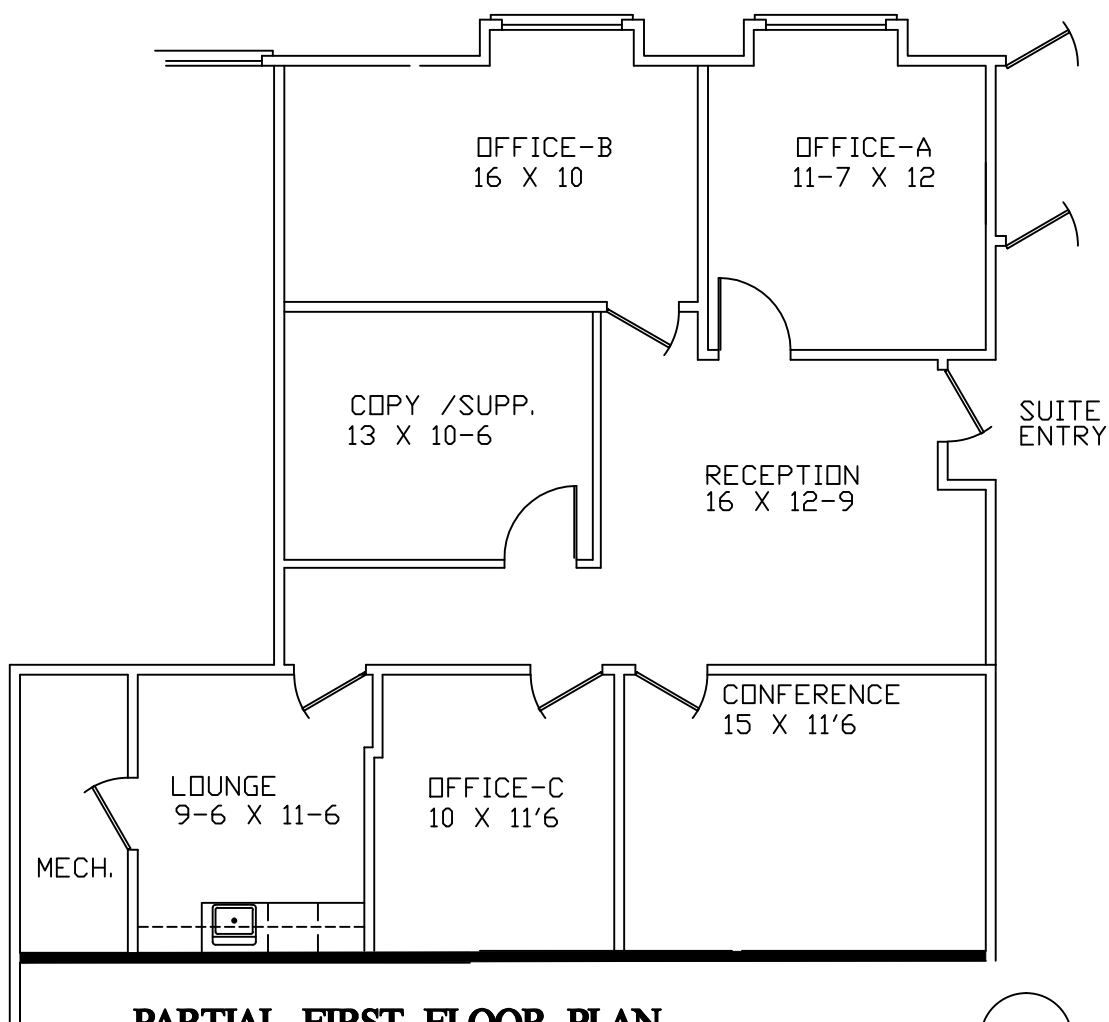
31100 TELEGRAPH ROAD, BINGHAM FARMS, MI.

AVAILABLE FOR LEASE

APPROX. 1,360 R.S.F.

SUITE 220

10-2-2020



PARTIAL FIRST FLOOR PLAN

SCALE: 1/8"=1'-0"



Beachum & Roeser

MANAGEMENT AND DEVELOPEMENT COMPANY

FOR INFORMATION
CONTACT:
BILL BEACHUM
248-647-7500