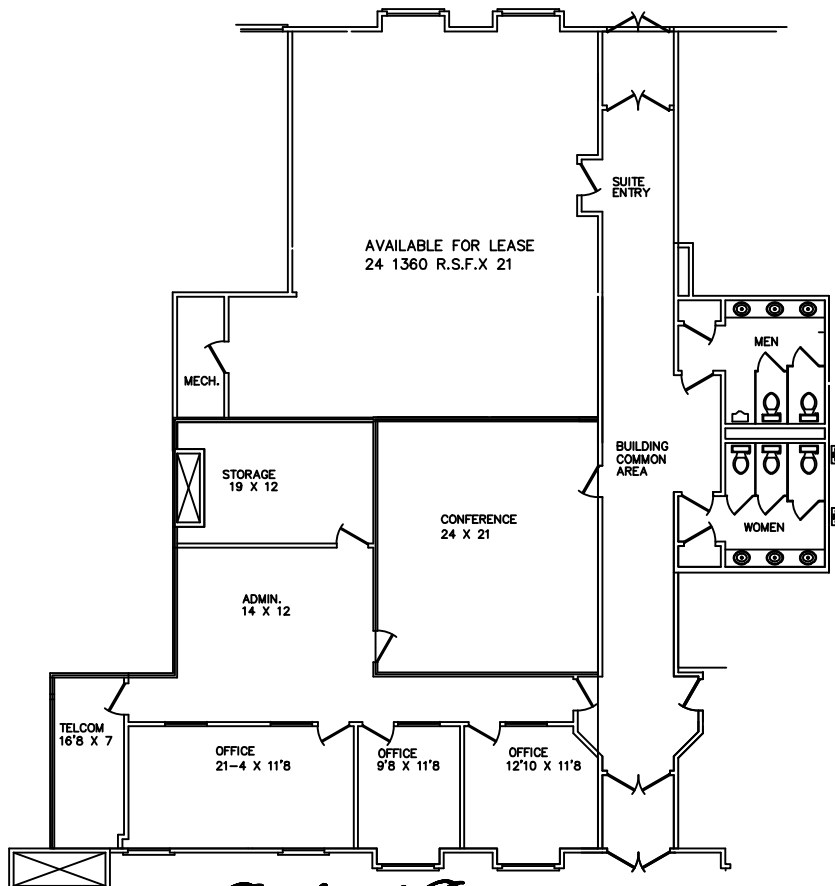


**JAMESTOWNE EXECUTIVE OFFICES**

31100 TELEGRAPH ROAD, BINGHAM FARMS, MI.  
 AVAILABLE FOR LEASE  
 SUITE #230  
 APPROX. 2,073 R.S.F.  
 10-2-2020



*Beachum & Prosser*

**MANAGEMENT AND DEVELOPMENT COMPANY**

FOR INFORMATION  
 CONTACT:  
 BILL BEACHUM  
 248-647-7500