

## Bingham Farms - Jamestowne 31100 Building - 2,601 Sq. Ft



**PROPERTY ADDRESS:**

31100 Telegraph Road  
Suite 250  
Bingham Farms, MI 48025

**SUITE SIZE:** 2,601 Sq. Ft.

**AVAILABLE:** Immediately

**FLOORPLAN:** See page 2

**LEASE RATE:** Negotiable

**LEASE TERM:** Negotiable

**DEMOGRAPHICS:**

***Oakland County, MI:***

Population (2015): 1,243,970

Median household income (2015): \$67,465

Median house value (2015): \$178,900

***Bingham Farms, MI:***

Population (2015): 1,133

Median household income (2015): \$102,083

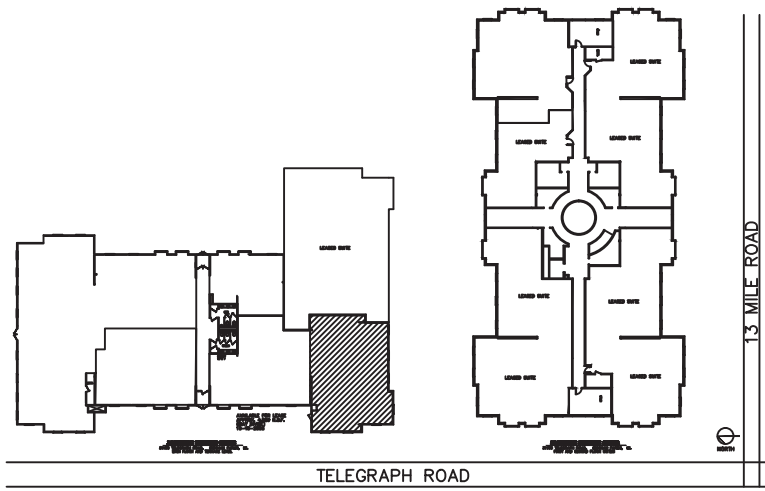
Median house value (2015): \$361,500



**SUITE DESCRIPTION:**

- 3 corner, windowed offices
- 2 windowed offices
- 2 non-windowed offices
- Waiting area upon entry
- Reception
- Coffee room with sink and countertop
- A large, center conference room
- Copy room
- Large storage closet
- Private, in-suite men's & ladies' lavatories

Other features include: windows that open; individual control of HVAC and plenty of convenient parking.



**JAMESTOWNE EXECUTIVE OFFICES**

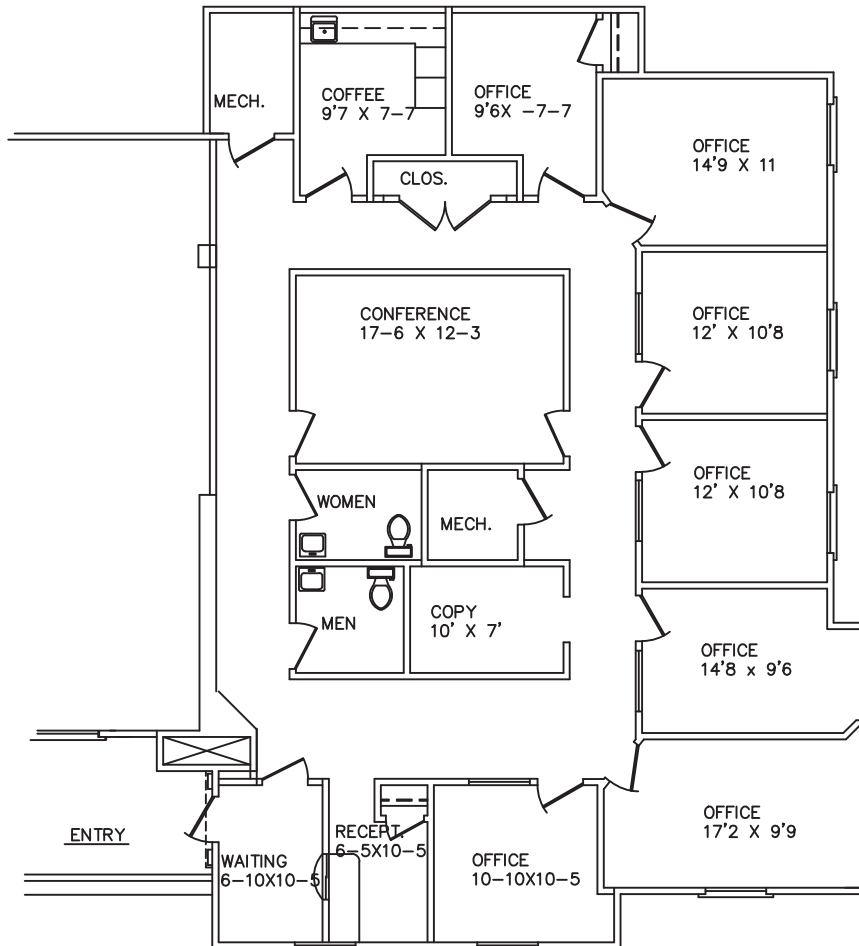
31100 TELEGRAPH ROAD, BINGHAM FARMS, MI.

AVAILABLE FOR LEASE

APPROX. 2,601 R.S.F.

2-25-2021

SUITE #250



*Beachum & Poeser*

**MANAGEMENT AND DEVELOPEMENT COMPANY**

FOR INFORMATION

CONTACT:

BILL BEACHUM

248-647-7500