

## Bingham Farms - Jamestowne South Building - 3,000 to 8,300 Sq. Ft



### PROPERTY ADDRESS:

24255 W. Thirteen Mile Rd  
Suite 200  
(can be combined with suite 250 for 8,300 sqft)  
Bingham Farms, MI 48025

**SUITE SIZE:** 5,330 Sq. Ft.

**AVAILABLE:** Immediately

**FLOORPLAN:** See page 2

**LEASE RATE:** Negotiable

**LEASE TERM:** Negotiable

### DEMOGRAPHICS:

#### *Oakland County, MI:*

Population (2015): 1,243,970  
Median household income (2015): \$67,465  
Median house value (2015): \$178,900

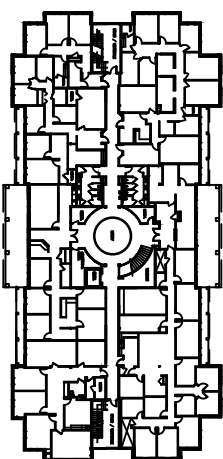
#### *Bingham Farms, MI:*

Population (2015): 1,133  
Median household income (2015): \$102,083  
Median house value (2015): \$361,500

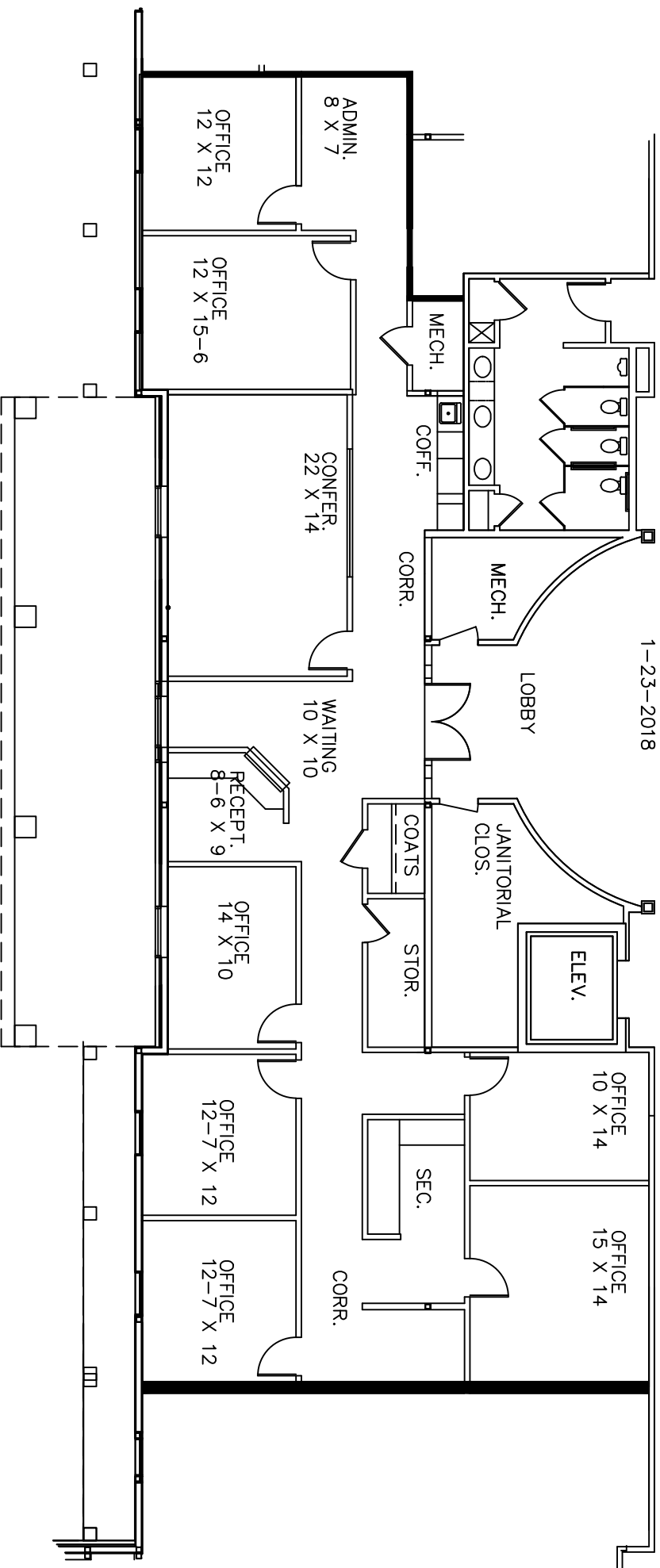


### SUITE DESCRIPTION:

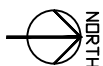
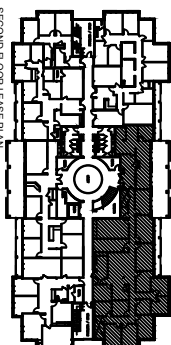
Very nice, extra-large suite available at the top of the beautiful centrally located spiral staircase in the prestigious Jamestowne South Executive Office Building. Suite features: A double door entry into the suite's lobby; nine (9) windowed offices; four (4) non-windowed offices; two (2) conference rooms; an employee lounge; a file room; and two (2) admin stations. Other features include: Windows that open; individual control over the HVAC and plenty of convenient parking, just steps from building entrance.



**AVAILABLE FOR LEASE**  
APPROX. 3,000 RENTABLE SQ.FT.  
SUITE 200  
1-23-2018



13 MILE ROAD



TELEGRAPH

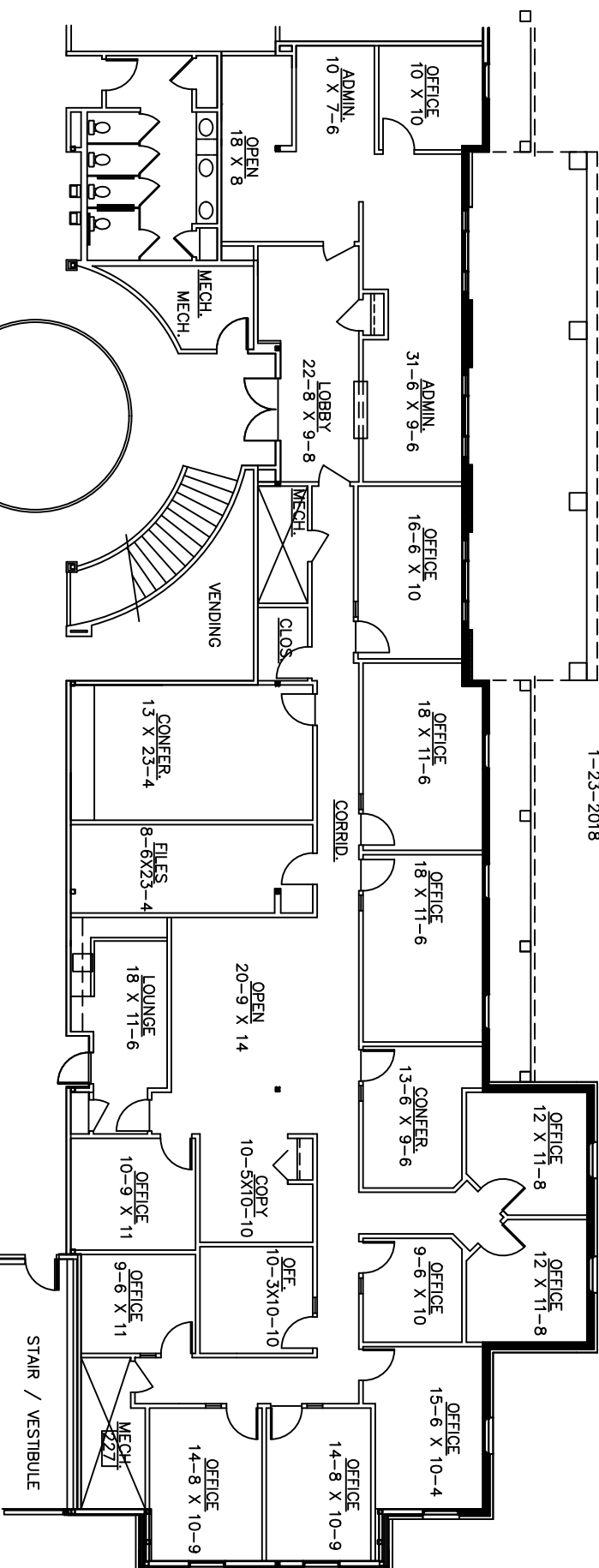
## JAMESTOWNE-SOUTH

2425 THIRTEEN MI. RD.  
BINGHAM FARMS, MI

**AVAILABLE FOR LEASE**

APPROX. 5,330 RENTABLE SQ.FT.

SUITE 250  
1-23-2018



*Beachum & Poeser*

MANAGEMENT & DEVELOPMENT CORPORATION

CALL:

BILL BEACHUM

248-647-7500