

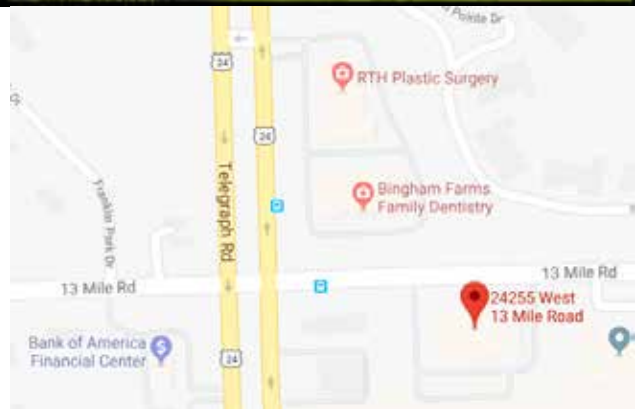
Bingham Farms - Jamestowne South Building - 1,521 Sq. Ft



PROPERTY ADDRESS:
24255 W. Thirteen Mile Rd
Suite 210
Bingham Farms, MI 48025

SUITE SIZE: 1,521 Sq. Ft.
AVAILABLE: Immediately
FLOORPLAN: See page 2
LEASE RATE: \$23.50 per R.S.F.
LEASE TERM: Negotiable
DEMOGRAPHICS:

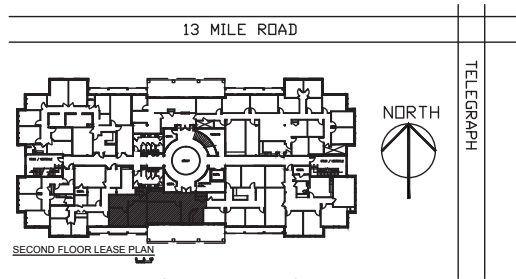
Oakland County, MI:
Population (2015): 1,243,970
Median household income (2015): \$67,465
Median house value (2015): \$178,900
Bingham Farms, MI:
Population (2015): 1,133
Median household income (2015):
\$102,083
Median house value (2015): \$361,500



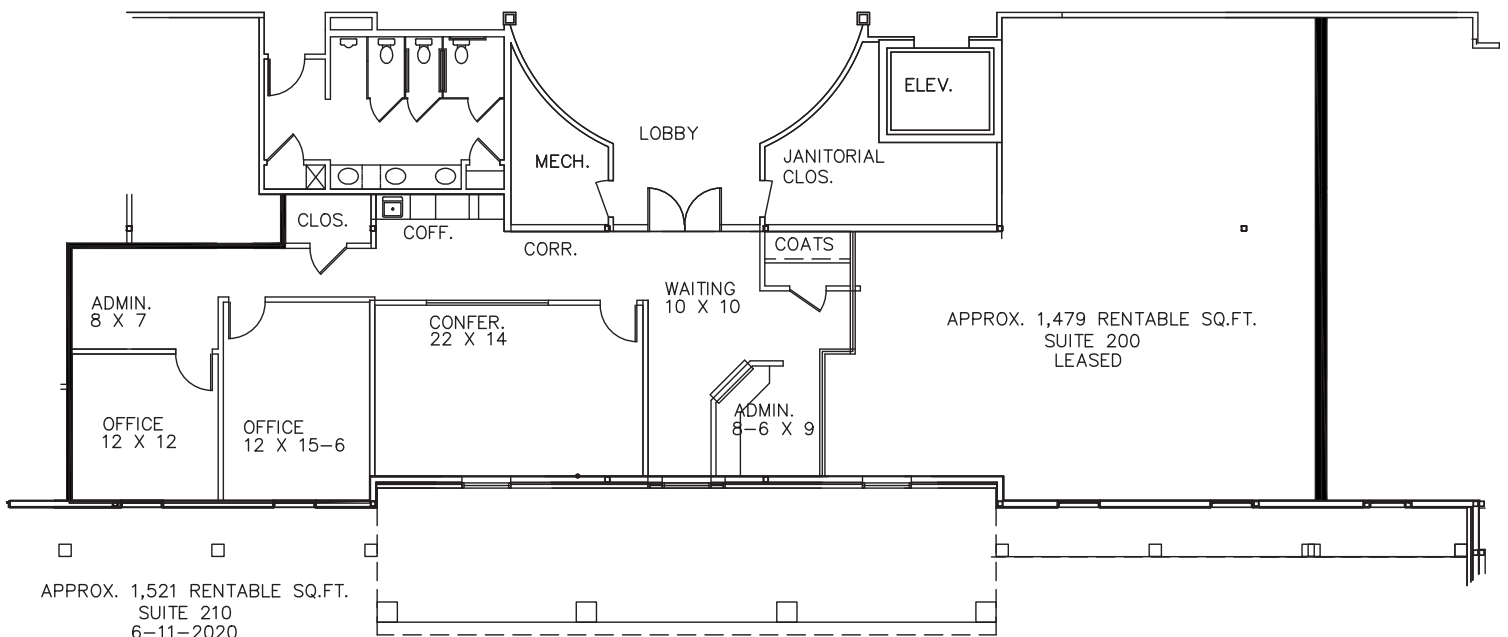
SUITE DESCRIPTION:
Nice 2nd floor suite available for lease.

- Entry/waiting area with admin station
- Large conference room
- 2 windowed offices
- Large admin area
- Coat closet
- Supply closet
- Coffee area with sink & counter

Other features include: windows that open; individual control over HVAC and plenty of convenient parking.



JAMESTOWNE-SOUTH
 2425 THIRTEEN MI. RD.
 BINGHAM FARMS, MI
 AVAILABLE FOR LEASE



Beachum & Roeser

MANAGEMENT & DEVELOPMENT CORPORATION

CALL:
BILL BEACHUM
 248-647-7500