

Bingham Farms - Jamestowne South Building - 1,488 Sq. Ft



PROPERTY ADDRESS:

24255 W. Thirteen Mile Rd
Suite 260
Bingham Farms, MI 48025

SUITE SIZE: 1,488 Sq. Ft.

AVAILABLE: Immediately

FLOORPLAN: See page 2

LEASE RATE: Negotiable

LEASE TERM: Negotiable

DEMOGRAPHICS:

Oakland County, MI:

Population (2015): 1,243,970
Median household income (2015): \$67,465
Median house value (2015): \$178,900

Bingham Farms, MI:

Population (2015): 1,133
Median household income (2015): \$102,083
Median house value (2015): \$361,500

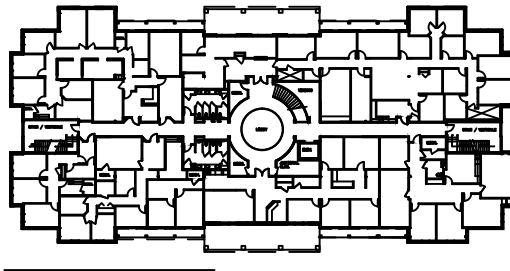


SUITE DESCRIPTION:

Nice corner suite that features:

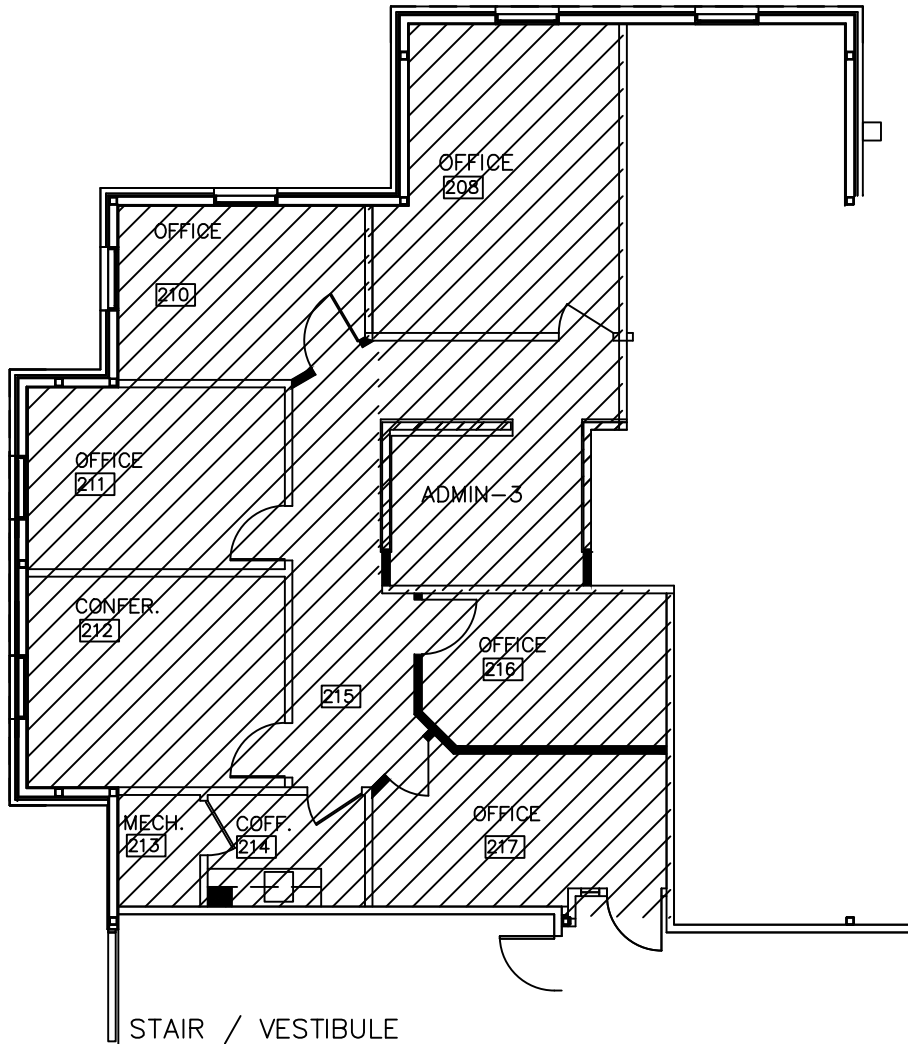
- 3 windowed offices
- A windowed conference room
- 2 non-windowed offices
- A large admin station
- Coffee room with sink & counter

Other features includes: windows that open; individual control over HVAC; and plenty of convenient parking



SECOND FLOOR LEASE PLAN

AVAILABLE FOR LEASE
APPROX. 1,488 RENTABLE SQ.FT.
8-4-2020
SUITE #260



PARTIAL SECOND FLOOR PLAN



NORTH

SCALE: 1/8"=1'-0"



MANAGEMENT & DEVELOPMENT CORPORATION

CALL:

BILL BEACHUM
248-647-7500