

West Bloomfield - Yorktowne Building - 1,379 Sq. Ft



PROPERTY ADDRESS:

5777 W. Maple Rd.
Suite 177
West Bloomfield, MI 48322

SUITE SIZE: 1,379 Sq. Ft.

AVAILABLE: 11/1/2020

FLOORPLAN: See page 2

LEASE RATE: Negotiable

LEASE TERM: Negotiable

DEMOGRAPHICS:

Oakland County, MI:

Population (2015): 1,243,970
Median household income (2015): \$67,465
Median house value (2015): \$178,900

West Bloomfield, MI:

Population (2015): 65,885
Median household income (2015): \$91,028
Median house value (2015): \$251,400



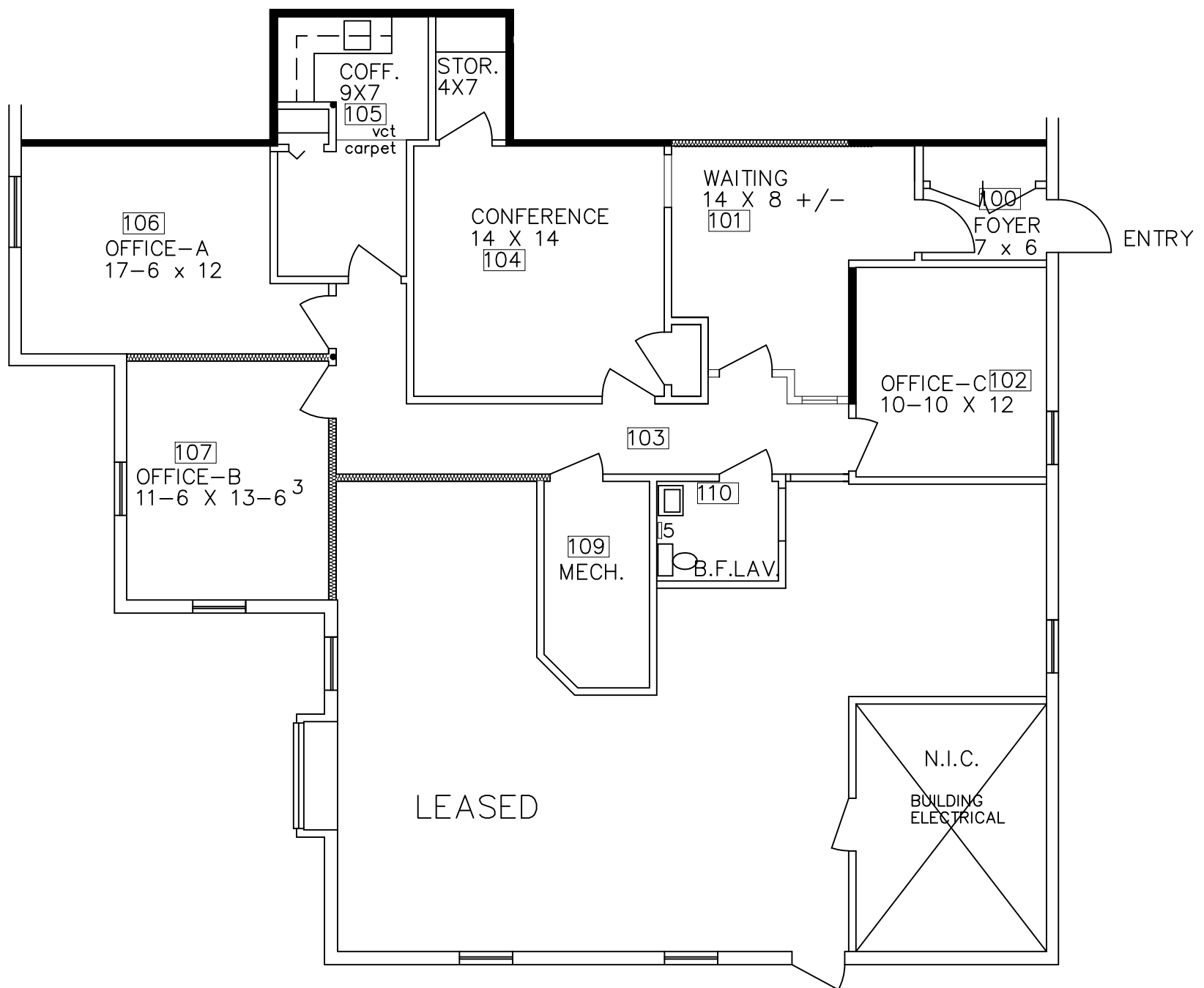
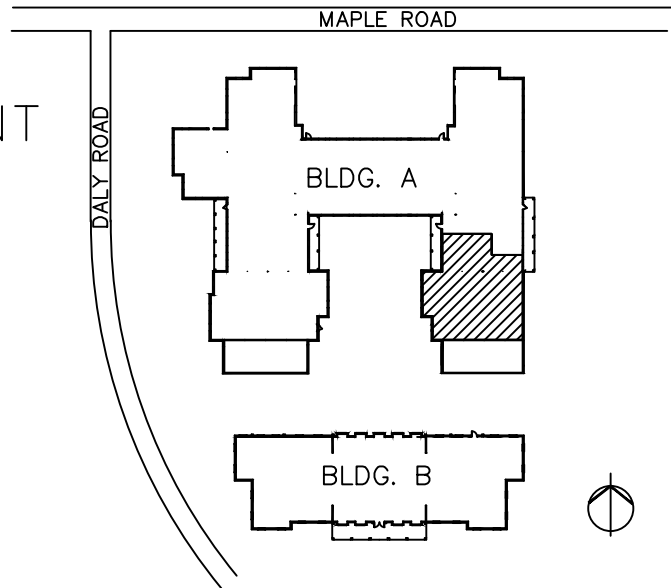
SUITE DESCRIPTION:

- Nice suite with courtyard views
- 3 windowed offices
- A foyer entry into nice waiting area
- Large conference room
- Storage room
- Kitchen with countertop and sink
- Private lavatory

Other features include: Individual control over HVAC; windows that open and convenient parking just steps from entrance.

BEACHUM & ROESER DEVELOPMENT
 YORKTOWNE EXECUTIVE OFFICES
 5777 MAPLE – WEST BLOOMFIELD
 AVAILABLE FOR LEASE

APPROX. 1,379 R.S.F.
 SUITES – 177
 8-4-2020



Beachum & Roeser

DEVELOPMENT & MANAGEMENT CORPORATION

CALL:
 BILL BEACHUM
 248-647-7500